

FREE



THE CAMPAIGN FOR REAL ALE

THE HERTFORDSHIRE NEWSLETTER

JUNE 1983

CIRCULATION 5000

NUMBER 62

MAC'S SEE THE LIGHT!

Posters are appearing throughout our fair county, depicting a pint of McMullen's ale, a hand pump, and proclaiming that this is "The Real McCoy".

Congratulations to Mac's; this is the first visible proof that they now agree with our contention that traditional handpumped ale, rather than the gassy, pressurised variety from an illuminated bar mounting, is the real thing.

So next time you are offered a pint of top pressure beer at a Mac's pub, refuse it. Ask for a pint of the Real McCoy. From a handpump.

However, another aspect of our local brewers' activities does not appear to be quite so pleasant. Some months ago, Mac's closed The Rising Sun at Halls Green, near Weston, apparently to carry out repairs. Strong rumour now has it that the pub is not to be re-opened, but to be sold, without licence, as a private house. In the early days of CAMRA's North Hertfordshire Branch, the Rising Sun was an idyllic spot, with excellent beer straight from the barrel, and a lovely garden with childrens' amusements and lots of animals. True, in recent years the pub had become run down and the welcome was less friendly, but here was a pub well loved by the community and with excellent prospects for an ambitious owner or tenant. It is a shame that the public will, apparently, be denied the opportunity to visit this lovely little pub any more. Let us hope that the Rising Sun does not join the much-lamented Goose at Moor Green on the list of pubs that Mac's closed.

Pints 'n' Litres

REAL ALES TO TAKE AWAY

Greene King ● Adnams ● Everard Tiger

● Guest beer: Archers Village 54p ●

● Also Real Draught Cider ●

BRIGHT POLYPINS AND CASKS ALWAYS AVAILABLE
from 50p per pint

GLASS LOAN ● OPTIC HIRE

BAR SERVICE AND CATERING AVAILABLE

HOLD YOUR OWN ALE FESTIVAL WITH
BRIGHT BEER AND PUMPS FROM US

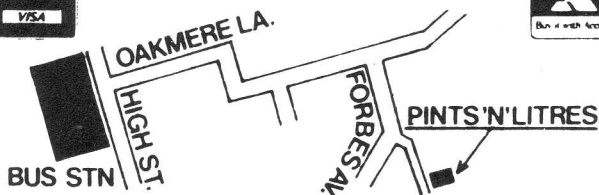
Open Mon: 5.30-10; Tues-Fri: 10.30-1, 5.30-10;

Sat: 10-2, 5.30-10; Sun: 12-2, 7-9

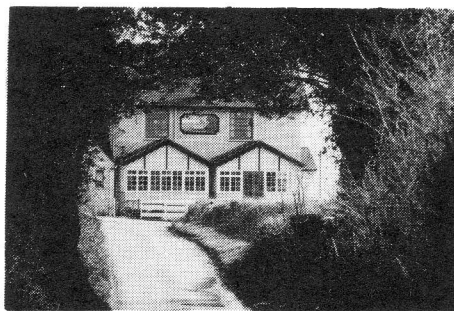
at 6 Eastfield Parade, Forbes Avenue, Potters Bar
☎ Potters Bar 55585



VISA



THE BARLEY MOW



TYTTENHANGER GREEN

TRY OUR 15 REAL ALES

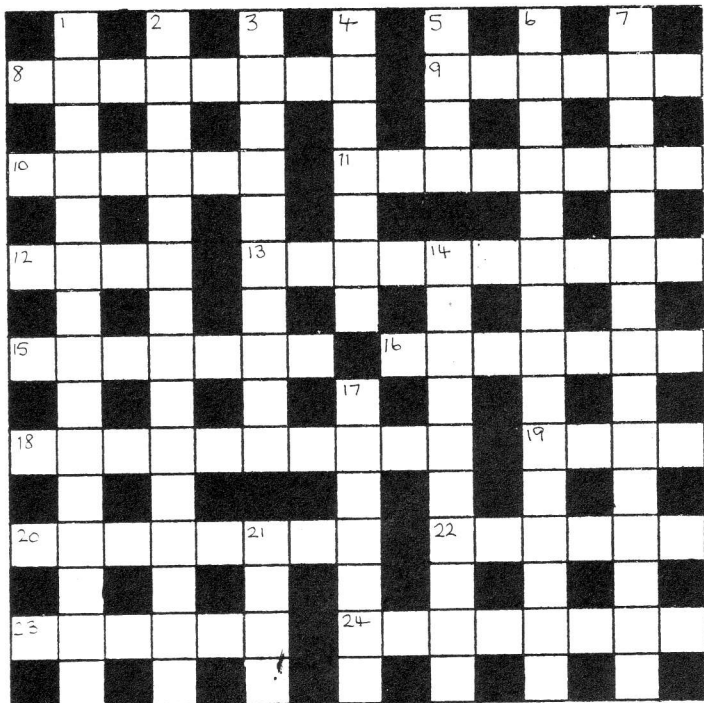
Winner of the Clean Food Competition for pubs in St. Albans, awarded by the District Council Environmental Health inspectors.

We hope that you will come and enjoy our food — our barbecue is now in use in the evenings

**PLEASE NOTE NO COACHES
INCLUDING MINI BUSES**

COMPETITION

The sender of the first correct entry opened on July 8th will receive a CAMRA 'Fault finders guide' tea towel. Please mark envelopes June Competition.



Across

8. Tended to be bent (8)
9. Trees, maybe a hundred — considerable quantities (6)
10. Decline a sort of tip? (6)
11. What happens frequently in cricket, we hear, without too much care (8)
12. Without a half? What a state to be in! (4)
13. U-Uncle Bert stuttered, having agitated condition (10)
15. Treason, possibly, isn't what USA expects of him (7)
16. Greedy birds (7)
18. Compatible insects not swarming (10)
19. Where you buy beer ingredients back to front (4)
20. Foster development in young animal at first sign of embryogenesis (8)
22. After scrap begins, some blows will produce grazes (6)
23. Churchman in Ryde a conformist espied (6)
24. Showing bravery with courtesy, church supplanted Right in opposition (8)

Down

1. Where pump mechanisms are usually secret (5,3,7)
2. Farmhand's break, but he's unlikely to choose this (10,5)
3. Plans for No 10 sit-in arranged ... (10)
4. ... and worried about a day in France put off (7)
5. It's long been found in Teachers (4)
6. Enthuse, and, with narrow escape, it's out of the frying pan ...? (6,3,6)
7. Diligence shown by model might help her get a job (11,4)
14. Trust in CIA? That's silly and unappealing (10)
17. What dose undecided sit on for protection (7)
21. Relation in Taunton (4)

There were no correct entries for the April competition. The solution was:
Across: Chaise, Beacon, Pair, Optic Nerve, Nellie, Impurely, Publisher, Bevy, Dean, Grapeshot, Euphoria, Larger, Incomplete, Bran, Leeway, Assize.

Down: Chateau, April, Showers, Escape, Cheerless, Novelty, Strikebreaker, Loathsome, Diurnal, Palmers, Overage, Grappa, Rabbi.

A Roundsman's Holiday

'Doing the Rounds' will be continued next month, as there are no Rayments tied houses in the Lake District ...

QUICK ONES

Vacant Crown

There are strong rumours that Charrington's are proposing to withdraw their pleasant Crown Bitter from their range of beers.

Charrington are part of the mighty Bass group, who have recently angered beer drinkers in the Midlands by phasing out the once popular Worthington Bitter. CAMRA views any proposal to withdraw Crown as a restriction of customer choice, which is ultimately in no-one's best interests.

If you can no longer obtain Crown Bitter at your Charrington local, let the Newsletter or your local CAMRA contact know. More important, complain to the landlord about it!

Cheshire Oak

One of the star and most surprising guest beers at CAMRA Hertfordshire North Branch's recent Baldock Beer Festival was Bitter from the Oak Brewery of Ellesmere Port, Cheshire. Ellesmere Port, for those who know it, is hardly a mecca for real ale or anything else, but against all odds, Tony Allen (a former Bass brewer) has set up his own small brewery there and produces some excellent brews with a distinctive northern flavour.

Oak Brewery beer is occasionally available at the excellent Buffalo's Head in Puckeridge.

Great British (Birmingham) Beer Festival

After two successful years in Leeds, CAMRA is moving the Great British Beer Festival to Birmingham. The Festival will be held from the 7th to the 10th September at the Bingley Hall, Birmingham.

Why not get a party together from your local pub or club and go and see what Birmingham is like? The hall is in the centre of the town, and Birmingham is easy to get to from most parts of the country. At the Festival you will be able to sample beers from a hundred different brewers. As an added incentive, parties of 20 or more will be admitted free if they book in advance with Ken Mathews, 74 Raleigh Road, Hornsey, London N8 0JA. So make a note in your diaries: 7th-10th September, Bingley Hall, Birmingham.

How Local is Local?

Local Ind Coope landlords, whose pubs are currently being painted in smart green and gold colours, will be pleased to know that their brewery is to sponsor the smart green and gold strip of a local football team. The prospect of friendly competition with Benskins' support for Watford must be inviting.

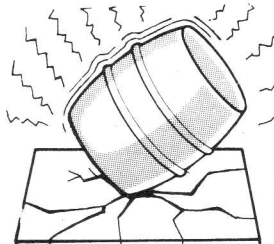
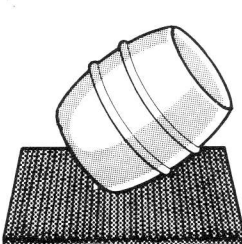
So which is this local team? Spurs, West Ham (the nearest team to Romford?) Luton even? No. Well, actually, it's ... Leicester City.

Victoria on TV

The Victoria Brewery was featured on the BBC2 Food and Drink programme shown on Thursday 5th May. The programme included a spot on the launch by HERTS288 (the local Prestel service) of its page on Hertfordshire's 'Top 100 Real Ale Pubs'.

During the programme a group of rugby players were seen sampling the delights of Victoria Bitter. Afterwards the remainder of the cask was despatched by the floor crew!

YOUR CELLAR · YOUR CHOICE





◦ IMPACT PROOF ◦ NOISE REDUCING ◦ EASY TO CLEAN ◦

Protect your floors from impact damage and corrosion with Enviromat

ENVIROMAT

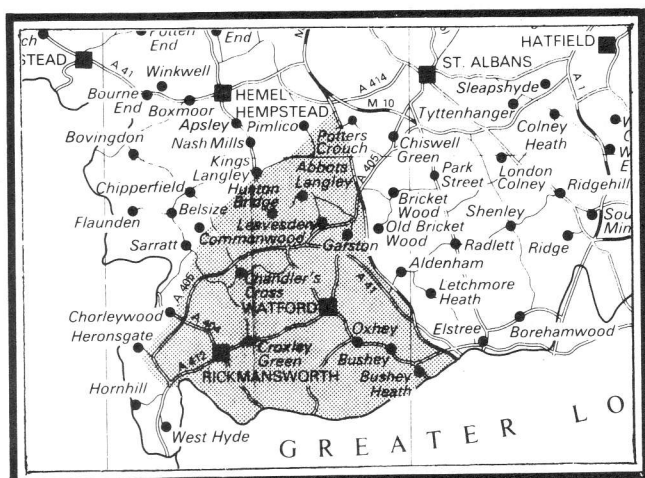
supplied installed and serviced by
ARL Limited Thifts House,
 London Road, Ware,
 Herts, SG12 9QU



Telephone (0920) 5941 Telex 81488 IMCO G

NEW BRANCH

The Watford Triangle



No — not an area where aeroplanes disappear, nor even an area for growing poppies, but a NEW branch of CAMRA.

This branch, previously the domain of Herts South, has been formed at the request of local members who wish to concentrate their efforts in winning the battle for real ale and choice in 'the triangle'.

Within the branch boundaries are over 100 pubs as well as licensed clubs and hotels, of which 20% do not offer the customer a choice of draught beer. Here we hope to persuade the licencees and breweries that, where conditions are suitable, real ale can be offered as a choice to the customer and an opportunity to extend the trade of the premises. Inevitably, if the turn-over of draught beer is so low that cask beer could not be sold before going off, then there will always be a number of pubs that will never be able to sell real ale. Fortunately, even in these depressed times, there are very few of these houses in 'the triangle'.

The branch will also be carefully monitoring the quality of the real ales offered by pubs in 'the triangle', giving praise to the good ones and criticisms to the bad (and not just directed to the licensee but also at the brewer).

As with most CAMRA branches we also hope to keep up the social side with events like darts/domino matches, 'spot the beer' tasting evenings and visits to breweries.

So come and join the 'triangle', where campaigning can also be fun. Details of meetings will be printed in this Newsletter, or can be obtained from me on 01-736 1234 (Extn 232) (work) or 01-864 6095 (home). Cheers!

John Mann
Press/Publicity Officer

WHAT'S ON AT YOUR PUB

- 3 June **Woolmer Green:** Chequers. 8pm. Stevenage Folk Club, Songwriting Competition.
- 6 June **Welham Green:** Hope and Anchor. 8.15pm. Morris Dancing: St. Albans Morris Men.
Colney Heath: Crooked Billet. 9.15pm. Morris Dancing: St. Albans Morris Men.
- 8 June **Flaunden:** Green Dragon and Bricklayers Arms. 8pm. Morris Dancing: Woodside Morris Men.
- 10 June **Woolmer Green:** Chequers. 8pm. Stevenage Folk Club. Guests: Keith Kendrick and Barry Coope.
- 13 June **Kings Langley:** Unicorn. 8.15pm. Morris Dancing: St. Albans Morris Men.
Abbots Langley: Royal Oak. 9.15pm. Morris Dancing: St. Albans Morris Men.
- 17 June **Woolmer Green:** Chequers. 8pm. Stevenage Folk Club. Guest: Steve May.
- 20 June **Kinsbourne Green:** Fox. 8.15pm. Morris Dancing: St. Albans Morris Men.
Harpenden: Cross Keys. 9.15pm. Morris Dancing: St. Albans Morris Men.
- 22 June **Letchmore Heath:** Three Horseshoes. 8pm. Morris Dancing: Woodside Morris Men.
- 24 June **Woolmer Green:** Chequers. 8pm. Stevenage Folk Club. Guests: Cilla Fisher and Artie Trezise.
- 25 June **Wheathampstead:** Cherry Trees. 8pm. Annual Barber Shop Music Festival (proceeds in aid of charity).
- 27 June **Potten End:** Red Lion. 8.15pm. Morris Dancing: St. Albans Morris Men.
Frithsden: Alford Arms. 9.15pm. Morris Dancing: St. Albans Morris Men.
- 29 June **Leyhill:** Swan. 8pm. Morris Dancing: Woodside Morris Men.
St. Albans: Goat. 8.30pm. Morris Dancing: Cottonmill Clog Morris.
St. Albans: White Lion. 9.30pm. Morris dancing: Cottonmill Clog Morris.

Please send details of events (in not more than 15 words) by the 12th of the previous month to Peter Lerner, 14 Hazeldell, Watton at Stone, Herts.

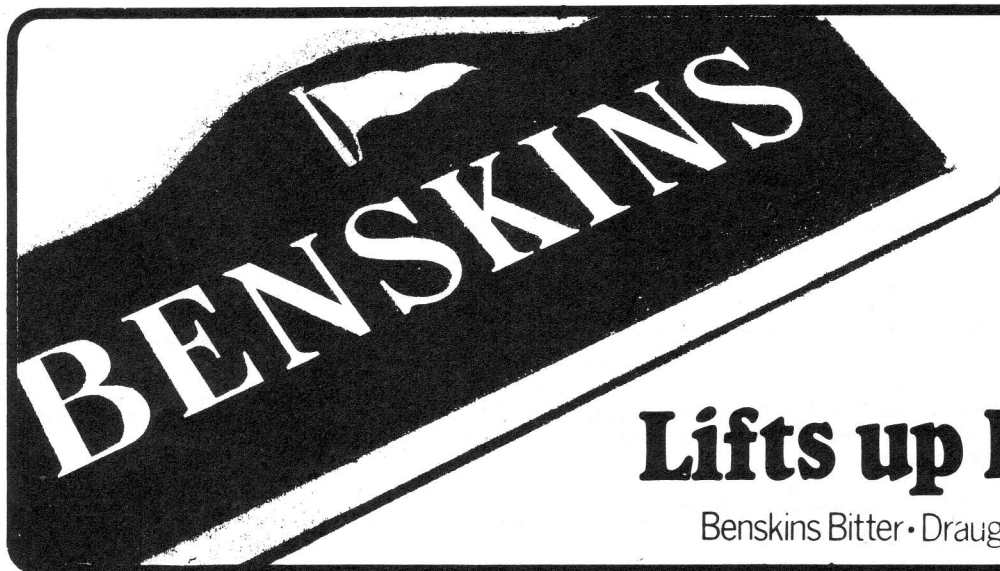
THE ROYAL OAK, BUSHEY

Free House

★ 6 Real Ales □ Food ★
★ Guest Beers ★

Beer garden with childrens playground

SPARROWS HERNE ★ ON THE A411



Lifts up Herts.

Benskins Bitter • Draught Burton Ale

PUB NEWS

Sincere apologies to the **Crown & Sceptre**, Briden's Camp for missing them off last month's list of pubs which have been in every edition of the Good Beer Guide. This excellent free house has now added Greene King dark mild to its range of beers.

News from in and around Stevenage: The **Roebuck** now has only one handpump, dispensing Rayments BBA. The **Longship** has recently reopened after renovations, and now serves Ruddles County, Websters Yorkshire Bitter, Watney's London Bitter and real cider, all on handpump (albeit of the white plastic variety). The **Plume of Feathers** in Little Wymondeley now has no handpump and sells no real ale.

Tetley Bitter is available on handpump at the **Strathmore Arms**, St. Paul's Walden and the **Lytton Arms**, Old Knebworth.

Latest news on the **Waterford Arms**, Waterford: the tenant was declared bankrupt last October, and Greene King are standing by with a new tenant as soon as the pub is vacant.

The **Old Bull**, Royston, has discontinued selling Flowers Original. The **Manor House** club, also in Royston, is selling Everard Tiger on handpump at a very reasonable price — non-members should be signed on at the bar by a member. At the **North Star** in Royston, Wetherseds seems to be available only once in a blue moon . . .

The **Kings Arms**, Berkhamsted has introduced a 'happy hour' from 6-7pm, when most of its draught ales are on sale at 60p a pint. Bill Gregory, landlord of the **Gate** at Chorleywood, has moved over the border to the **Red Lion** at Chenies, and rumour has it that the **Gate** is to be turned into a steakhouse. The **Valiant Trooper** at Aldbury has added Fuller ESB to its range of beers.

In Hertford, the **Ram**, Fore Street, a McMullen house, has recently been refurbished (very tastefully too!) and now offers AK and Country on handpump. The **Lord Haig**, in South Street (another Macs pub) has recently changed hands. New tenants Kevin and Sue Campbell have had handpumps installed for the AK and Country, and are also offering an interesting lunchtime and evening menu.

Congratulations to two South Herts GBG pubs for winning Best Cellar awards — the **Wrestlers** in Hatfield (1st place in the Ind Coope East Anglia Competition) and the **John Bunyan** in coleman Green (2nd place in McMullen's Tenanted House competition).

Finally, Dacorum Council have seen the light and revised licensing hours for the district — pubs can now open at 5.30pm in the Hemel Hempstead areas.

BRANCH DIARY

HERTFORDSHIRE NORTH BRANCH

Sunday 5th June

Lunchtime social, Strathmore Arms, St. Paul's Walden, 12 noon.

Wednesday 8th June

Branch Meeting, Bull, Watton-at-Stone, 8pm.

Wednesday 15th June

Two-pub social: King William IV, Mangrove Green (8.00 pm) and White Horse, Tea Green (9.15pm approx).

Wednesday 22nd June

Country walkabout. Meet Rose & Crown, Hitchin at 7.00pm. Bus leaves 7.40pm.

Wednesday 29th June

Pub of the Month social, Fox, Woolmer Green, 8.00pm.

Contact John Law Stevenage 721015

HERTFORDSHIRE SOUTH BRANCH

Tuesday 14th June

Herts Liaison Meeting, Wheatsheaf, Watford, 8.00pm.

Tuesday 21st June

Branch Meeting, Cricketers, Redbourn, 8.00pm.

Contact Eric Sim Hatfield 60647

WATFORD AND DISTRICT BRANCH

Saturday 4th June

Full day trip to Brighton (fare about £5). Pick up at Watford, Croxley, Rickmansworth.

Wednesday 8th June

Committee Meeting, West Herts Sports Club, Park Avenue, Watford, 8.00pm.

Tuesday 14th June

Inter-branch meeting and social, Wheatsheaf, Watford High Street, 8.00pm.

Wednesday 22nd June

Branch Meeting, Artichoke, Croxley Green, 8.00pm.

Contact John Mann 01-864 6095

MID-CHILTERNERS BRANCH

Thursday 9th June

Branch Meeting, Green Dragon, Flaunden, 8.30pm.

Tuesday 14th June

Herts Liaison meeting, Wheatsheaf, Watford, 8.00pm.

Thursday 23rd June

Joint social with Aylesbury Vale & Wycombe branch, Red Lion, Coleshill, 8.30pm.

Tuesday 28th June

Anti-social, meet Magpies, Coleshill, 8.30pm.

Contact Barry Bonnick Rickmansworth 775799

PICK OF THE PUBS

CAMRA's choice of the

Top 100 Real Ale Pubs in Hertfordshire

is now available on the HERTS288 community Prestel service.



Key *2880443#

288

Cast your vote for the Pub of the Month

May's choice — the Barley mow

For information on Prestel ring Freephone 2043

Landlords and brewers — you can have a full page on Prestel nationwide. Contact the Editor, Dave Burns on Welwyn 7805, or any CAMRA member.

Quick Ones . . . Continued

Benskins pulls Parker?

Rumour has it that Alan Parker, the popular landlord of the Old Bulls Head in Ware, is to forsake his glass polishing cloth for a polished shoe job with Benskins as a Trade Manager. Perhaps now, if the new tenant carries on the 24-hour games marathon, Benskins will be able to field at least one player.

Blakes Beer Cellar

96 Queens Road, Watford

- Brakspears ● Morrells ● Swannells ●
- Hook Norton ● Guest Beers ●
- Draught Cider ●

GOOD FOOD AT ALL TIMES

Open pub hours, 7 days a week

Licensed bar and catering for outside events

Polypins and casks always available

The Hertfordshire Newsletter is produced by the Hertfordshire South, Hertfordshire North, Watford and District and Mid-Chilterns branches of the Campaign for Real Ale Limited. The views expressed are not necessarily those of the Editor, CAMRA Ltd, or its branches. The Editor gratefully receives articles or letters for publication. **THESE SHOULD PREFERABLY BE TYPEWRITTEN AND DOUBLE-SPACED: HANDWRITTEN ITEMS SHOULD ALSO BE WELL SPACED AND AS LEGIBLE AS POSSIBLE PLEASE.** Send to Cathy Totman, Hixham, Furneux Pelham, Buntingford, Hertfordshire.

Subscriptions: £2 for 12 issues. Send to address above.

Advertising: £6 per 2.5cm column. Artwork can be made up at extra cost ☎ Albury 287 for details.

COPY DATE FOR JULY EDITION JUNE 10th. FOR AUGUST EDITION JULY 8th.

Printed and fimsset by D&S Graphics, Victoria Maltings, Broadmeads, Ware, Hertfordshire.