

THE CAMPAIGN FOR REAL ALE

THE HERTFORDSHIRE NEWSLETTER

AUGUST 1984

CIRCULATION 5000

NUMBER 75

'WE'RE NOT FOR SALE' — GREENE KING



Recent speculation in the national press that East Anglian brewers Greene King are about to be taken over by the multi-national Guinness combine have been vigorously denied by Greene King, at a recent meeting between their officials and local CAMRA members.

The Observer newspaper published a story that a take-over deal worth £110 million was in the offing, but Greene King say that no discussions on this subject have taken, or are taking place. The Bury St Edmunds and Biggleswade brewers' Managing Director, Martin Corke, said: "Greene King is not in discussion with any other party nor would any approach be welcomed by the Greene King board."

The Abbot Ale brewery has been the subject of several other take-over rumours in recent months. Suggested purchasers have been the Barclay Brothers, who already own neighbouring Ipswich brewers Tolly Cobbold; also Scottish and Newcastle, the Youngers and McEwan company who are known to want to expand southwards. Greene King are believed to be uninterested, however, in an approach by either company.

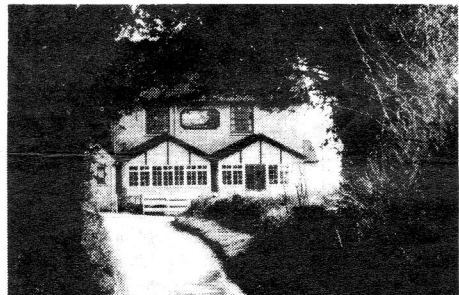
The possibility cannot, however, be ruled out of Tolly Cobbold coming onto the market again at some time in the future, and Greene King do not deny that they might themselves be interested in buying the company.

Speculation is rife, but it does seem unlikely that Greene King, who are a sound, profitable and well-managed company, would be likely to fall prey to a take-over in normal circumstances. The company's history shows, however, that they have consistently expanded by taking over other, smaller companies, and this possibility cannot be ruled out. CAMRA would oppose a Greene King take-over of Tolly Cobbold, as this would almost certainly result in the closure of Tolly's brewery and the establishment of a virtual Greene King monopoly over parts of East Anglia, to the obvious detriment of customer choice.

Peter Lerner

BROCKET ARMS
— Ayot St Lawrence —
*Drink in the rural atmosphere of
George Bernard Shaw's haunt*
A well-sampled real ale pub
with beers from
Everard • Greene King
Marston • Wadworth
plus guest beers
Meals available seven days a week
Enquiries welcome ☎ Stevenage 820250

THE BARLEY MOW



TYTTENHANGER GREEN

**YES! WE ARE BACK, BETTER THAN
EVER, WITH THE LARGEST SELECTION
OF REAL ALES IN HERTFORDSHIRE**

We also pride ourselves that they are all in
the best of condition. Our barbecue is now open
every night, weather permitting.

**PLEASE NOTE NO COACHES
INCLUDING MINIBUSES**

COMPETITION

The sender of the first correct solution opened on September 14th will receive a copy of 'Hops and Hop-picking' by Richard Filmer. Please mark envelopes August Competition.



- Across**
- 6 Sounds like a barrel to lean on (4)
 - 8 Barley's contribution to brewing? (3,3,6)
 - 9 Manchester brewer leaves the borders (4)
 - 10 (Able to brew)about right — have a bottle of this? (5,3)
 - 11 Mineral water's penultimate following alternative (3)
 - 12 Part of a regular circle (3)
 - 13 Consume a tasty morsel (3)
 - 15 They perform for others in a toilet (6)
 - 17 I'll tuck into nuts, perhaps, then go to bed (3)
 - 19 Came across moon's first space traveller (3)
 - 21 Attend to every boy's problem — that's not wise, we hear (7)
 - 22 Strange people finally get what's left over (7)
 - 23 With middle missing, you begin to question purpose (3)
 - 25 We quietly sit back here (3)
 - 27 What comes from horse-dung, endlessly ploughed in (6)
 - 29 Number at work losing a vessel (3)
 - 30 It contains scenes of cruelty to cat (3)
 - 31 Real ale transported originally to desert (3)
 - 32 Is it celebrated by a third being drunk? (8)
 - 33 Essential ingredient of normal types of beer (4)
 - 35 What might prompt charge for dancing is part of the service in some pubs (8,4)
 - 36 It's surely not better with non-alcoholic ingredient (4)
- Down**
- 1 (Get cab or use)transport after a few pints of this (7,4)
 - 2 Naturalist in Australia (6)
 - 3 Suffolk men are nicely drunk after they start knocking it back (6)
 - 4 Cut down grassland with previous work back outside (7)
 - 5 Get access to distress? (6)
 - 6 It's dead since huntsman returned (6)
 - 7 The purpose of licentious expesses (3)
 - 14 Old coins and weapons in Stortford pub (7,4)
 - 16 There's so many bats in Birchanger (5)
 - 18 Eastern country withdraws help to Northern Ireland (5)
 - 19 Catty remark from Wiltshire brewing partner (3)
 - 20 A trifle dinky? (3)
 - 24 What you soak in when it's warm in Avon (3,4)
 - 25 Victoria might supply one kind of beer (6)
 - 26 Brew Ten, in the manner of big brewer (6)
 - 27 Bird taking one drink (7)
 - 28 Only the Anchor? Not a chance! (2,4)
 - 34 It could be strong, even without a head (3)

The winner of the June competition was Stan Ashton of Denham. The correct solution was: Across — Pig and Whistle, Reeling, Lectem, Gorge, Table-Beer, Naafi, Readiness, Free-Board, Erode, Refitting, Blast, Ice-belt, Vertigo, Transcendence. Down — Inebriate, Alice, Digit, Half-board, Secretive, Liege, Frog and Firkin, Introspection, In-between, Realistic, Egomaniac, Freer, Given, Barge.

BRANCH NEWS

You're never alone with the W & D

Anyone who has glanced through the Branch Diary, but never taken a great deal of notice of what was planned has, if they live in the Watford & District branch area, probably missed out on one or two very pleasurable experiences. As well as being a strong branch from a campaigning point of view (pub preservation, conversion of pubs to real ale, etc.) Watford & District branch has much to offer socially. Events such as the treasure hunt of Bushey, in July, which proved to be a thoroughly enjoyable test of knowledge and observation powers for any participant, CAMRA member or otherwise, especially those like myself who come from the area. A prize was awarded to the winners, and most people completed the trail of five pubs, collecting question sheets en route, without getting totally lost. A minibus trip to the Black Country was fully booked as soon as details were announced, even though we didn't know the ultimate destination! A chance to try other beers on their home ground is always welcome.

Other events over the past few months have included a 'Morris dancing in One Easy Lesson' session at the Pump House Arts Centre, Watford. This was a quite amazing evening, where members 'let themselves go' in an unprecedented fashion, doing their best to follow the instructions of the Woodside Morris Men.

A quiz night at the Wheatsheaf had participants racking their brains to answer questions on brews and breweries, local pubs, local history and general knowledge.

As part of the annual Hertfordshire branches' weekend away trip (this year we stayed at Buxton), a visit to Robinsons Unicorn Brewery was included. Other brewery trips have included Victoria, Ware and McMullens of Hertford - where Egon Ronay couldn't complain about the hospitality!

If you would like the chance to acquaint yourself with a few more local pubs, and meet some new faces, come and join us on one of our pub crawls - we've recently covered both Croxley Green and Rickmansworth - or perhaps try an 'anti-social' - you'll have to turn up to find out what that is! If you haven't been to a CAMRA event before, I hope your appetite has been whetted. You'll find details of what we're doing in the Branch Diary of this Newsletter, and in the What's On columns of the local Watford press. Alternatively, our Events Organiser Tony King (Tel: Watford 672587) will be pleased to give you details. See you soon!

Penny Marriot

Newsletter pubs in Watford & District area

Copies of the Hertfordshire Newsletter can generally be found in the following pubs: **Abbots Langley**: Royal Oak, Unicorn; **Bushey**: Foresters, King Stag, Royal Oak, Swan; **Carpenters Park**: Partridge; **Croxley Green**: Artichoke, Fox & Hounds; **Leavesden**: Swan; **Oxhey**: Haydon Arms; **Rickmansworth**: Feathers, Fox & Hounds; **Watford**: Blakes, Escourt Tavern, Tantivy, Wheatsheaf. Plus Croxley and Watford public libraries.

Game Bird flies on — a cautionary tale

The *Game Bird* (rapidly becoming the most famous pub in the Watford area, if not in Hertfordshire) successfully won its appeal against the refusal to renew its licence a few weeks ago. For our part, we are pleased to see it remain open, as it generally serves a good pint of Benskins and Burton Ale and is obviously very popular.

However, the whole incident does serve as a reminder that, in general terms, both sides of the counter have a responsibility for seeing that their pub does not cause a nuisance to its neighbours. We know that it is a minority element that causes the problem, but if we don't control them, then there could be other pubs featuring in the columns of the newspapers — closed for good!

Watford & District Branch

'Here for the Beer'

This exhibition is on view at Watford Museum from August 18th until September 8th, after which it will tour various venues in the county over the next 18 months. The exhibition covers the subject of the breweries of Hertfordshire, and includes much new material which has recently come to light from local societies and interested individuals.

There is detailed photographic coverage of the subject, many items kindly loaned by Benskins and local enthusiasts. Other aspects of the subject are also treated, including raw materials and bottles, with a fascinating insight into the way beer cans are made and printed. There is also a tape of Hertfordshire drinking songs, recently recorded for the occasion.

In all, it is a fascinating glimpse into this far-reaching subject, and amplifies the museum's existing displays of local brewery history.

from 'Watford Our Town' June 1984

Thursday 31st May saw the opening of the third Chiltern Beer Festival at the Pavilion, Hemel Hempstead. This event differs from most, in that it is run by the Local Authority, and the various participating brewers hire and staff their own stands. This allows for a beer festival in comfortable and spacious surroundings in a centrally situated venue. How many carpeted beer festivals have you been to?

The general feeling was that this year's event was the best yet, although some felt that the entertainment wasn't all that it could have been. The clientele was a refreshing cross-section of all ages, shapes and sizes, and the weekend was pretty much trouble-free.

The brewers are allowed to sell which ever of their beers they wish, including bottles, kegs and lagers, the one stipulation being that they must sell at least one real ale. For those who are wondering what CAMRA is doing getting involved in a beer festival which sells keg beer and lagers, I would point out that the Campaign's policy is consumer choice. It was abundantly clear that the consumer was choosing real ale in preference to fizz, which to my mind shows what a good campaigning exercise it was both for the public and for the brewers.

CAMRA had a stand selling six real ales, ranging from Greene King KK to Gibbs Mew Bishops Tippie. We sold our last pint eight minutes from the end of the festival. It might have lasted longer if the bar staff hadn't drunk so much of it (an estimated 9-10 gallons out the the 126 on the stand!) The CAMRA product stand, under the able direction of Mid-Chilltens' Pete Freeman, also sold respectable quantities of goods.

All in all a good booze-up was enjoyed, with plenty of beer available at reasonable prices, generally below pub prices, and of a good quality. Our thanks go to the Barley Mow and the Pre Hotel for their assistance, and of course to Dacorum District Council for again holding the event.

The next Beerex in the South Herts area is at Oakmere House, Potters Bar on three evenings 12-14th October 1984. CAMRA will again be running the bars, with entertainment provided by folk groups, jazz bands and brass bands, as part of events arranged and run by the Hertsmere District Council.

Dave Andrews



PLANNING NEWS

Greene King have applied for permission to extend the **Old George** at Ickleford, a listed building. As it is now this brewery's practice usually to install real ale when their managed houses are refurbished, could this be a signal for more handpumps in Ickleford?

Lend me your ears . . .

Am I really so out of touch with 'popular' opinion that I should **not** expect, or wish, to hold a conversation with a fellow being when visiting a hostelry? What am I moaning about, you may ask. It's the ever-growing practice of pub disco units being played as soon as one enters a pub, and at such a volume as to create a total wall of sound. Speakers are arranged such that there is no hiding place — even the loos are no longer spared! To request a reduction of decibels falls on deaf ears (what else should I expect?) "That's what the punters want", oft comes the reply. And so another watering hole is relegated to my book of undesirables, and a publican has lost another customer.

Therefore, may I make a compromise suggestion? Let's have a corner of the pub free of speakers and the ubiquitous fruit and electronic games machines, where we old fogies can ramble on about the good old days, whilst getting a few down us, without the need for semaphore flags.

'Moaning Minnie'

Name that pub

Easter 1985 will see the opening of a new pub at Thorley, Bishops Stortford, where Rayments are busy converting Piggotts Farmhouse, an ancient listed building now surrounded by new housing estates. The company have not yet thought of a name for the pub, so if you have any good ideas, please send them to the Newsletter, and we will pass them on.

More real ale

Although their real ales are normally of excellent quality, strangely Greene King have been the most reluctant of Hertfordshire breweries to replace top pressure beer in their pubs by the real thing.

The times are now changing, and the persistent efforts of CAMRA are bearing fruit (or rather, handpumps). Figures released to CAMRA by Greene King show that in the past two years, the number of handpumps in the company's pubs has increased by a steady 36%. Not surprisingly, the best performance has been in the company's Hertfordshire subsidiary Rayments, whose increase has been of the order of 57%.

Happy Birthday!

Herts North Branch will be celebrating their 10th Anniversary at a special social to be held at the *Crooked Billet*, Symonds Green, Stevenage on Wednesday 5th September from 8pm. Although none of the Branch's founder members now live in the area, familiar faces new and old will be there. If you have ever taken part in any of the branch's activities, please come along and say hello to old friends.

Guest beers — give us more

As most will know, guest beers have been featuring in some of our local Benskins pubs over the last year or so. Not being party to Benskins' board room (honest!), I cannot comment on the financial success from the brewery or publican's point of view, but I must commend them for having introduced the scheme.

Ah, I hear some of you saying, the guest beers on offer were nearly all from the Ind Coope Romford brewery. True, but it's a beginning. So come on Mr Benskin, let's try a few guest beers from other breweries (as ABC and Watneys have done). There are plenty of local breweries in Hertfordshire to try. Who knows, it may even convince the customers that Benskins is best!

Jim Axford
Benskins Liaison Officer

Peter & Lesley Reynolds welcome you to



THE STAR INN
FURNEUX PELHAM



Rayments BBA ★ Greene King KK & Abbot

GOOD HOME-COOKED FOOD
MONDAY TO SATURDAY

☎ Brent Pelham 227

PUB OF THE MONTH

The Plough, Wallington

August Pub of the Month for CAMRA's Hertfordshire North Branch is the **Plough**, in the pretty village of Wallington, near Baldock.

George Orwell once lived in Wallington, and in his day the **Plough** would have borne the sign of Simpson's Baldock Brewery. Today Greene King's handpumped KK, IPA and Abbot are kept in fine condition by friendly licensees Frank and Beulah Randall.

A typical English village pub, the **Plough** has contrasting lounge and public bars, and a large and interesting garden worthy of the attentions of my Newsletter colleague "Groundsman". Beulah is an avid collector of bits and pieces, and her assemblies of matchboxes and teatowels have created much interest in the bars over the years.

The **Plough** is a relaxed, unspoilt village local which has featured several times in CAMRA's national Good Beer Guide. If you have not been before, it will be especially worth visiting on 15th August, when CAMRA's Pub of the Month award is presented.

PL

THE ROYAL OAK, BUSHEY

Free House

★ 6 Real Ales □ Food ★
★ Guest Beers ★

Restaurant and carvery now open

Reservations preferable ☎ 01-950 2865

SPARROWS HERNE ★ ON THE A411

BLAKES

96 Queens Road, Watford

5 Real Ales ● Draught Cider ● Wines

GOOD FOOD AT ALL TIMES

Open pub hours, 7 days a week

HAPPY HOUR

Sunday 12 — 2pm

25% off all drinks

BOOK REVIEW

GREENE KING BIGGLESWADE BREWERY 1764-1984, by Ken Page.

The name of Greene King has been synonymous with the Bedfordshire brewing town of Biggleswade only for the last 20 years or so; this volume therefore really chronicles the story of Wells and Winch, taken over by the Bury brewers in the 1960s. Ironically, Wells and Winch's antecedents pre-date those of the parent company by over 30 years, Wells and Winch tracing their history back to 1764, while Greene King can claim only 1799.

This is a well-detailed and neatly-produced little book, with clear photographs and old brewery advertisements. It will inevitably stir reminiscences amongst older readers — would younger readers guess that in 1938 this company produced 6 draught beers including 3 milds (KK, AK and XX), a draught bitter, draught Brown Ale and Porter? Information on the company's purchases of other breweries is provided, together with details of Wells and Winch's vinegar-making subsidiary (would that other brewers were so honest!)

Excellent value for money, this little book is highly recommended. It is available for 50p, plus a 21p stamped addressed envelope (at least 9 by 6 inches) from the author, Ken Page, at Greene King & Sons plc, Biggleswade Brewery, Biggleswade, Beds.

Peter Lerner

Pints 'n' Litres

REAL ALES TO TAKE AWAY

Guest beer only 49p per pint during August

Everard ● Greene-King ● Victoria

Adnams ● Ruddles ● on draught

BRIGHT POLYPINS AND CASKS ALWAYS AVAILABLE

from 49p per pint

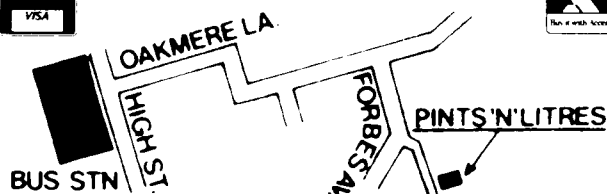
GLASS LOAN ● OPTIC HIRE
BAR SERVICE AND CATERING AVAILABLE

at 12 Crescent West (next to Hadley Wood station)

☎ 01-440 3404

and 6 Eastfield Parade, Forbes Avenue, Potters Bar

☎ Potters Bar 55585



BENSKINS

Lifts up Herts.

Benskins Bitter · Draught Burton Ale

CAMPAIGN FOR REAL ALE

There can be few beer drinkers nowadays who are not familiar with the expression "real ale" and who have never seen a pint pulled from a traditional handpump or drawn from the tap of a cask. Most have heard of CAMRA, the Good Beer Guide or the Great British Beer Festival, and many have a rough understanding of the industry and the way it is dominated by six giant companies. Things are different indeed from the dark days of 1971, when Watneys Red and Ind Coope Superdraught were the only brews that most local pubgoers knew, when lager was only drunk by ladies and unusual men, when mergers and monopolies were widely regarded as a good thing (big was beautiful), and the closure of a pub or brewery was officially considered as progress.

The remarkable shift in opinion which occurred in less than a decade was aided and abetted by CAMRA, which from small shoe-box beginnings grew into a successful and influential lobby for the pub-goer. Administered by an elected National Executive and a small full-time staff in St Albans, the Campaign operates at national and local branch level to increase the availability of traditional beer and to express a customer viewpoint on all related matters. In most industries market forces do this, but with brewing there exists a fundamental constraint — licensing — which, although not undesirable in itself, has caused the industry to develop in such a way that customer choice comes a definite second to brewer's convenience.

As the Big Six press ahead with their own campaign to have us all drink lager, local councils unwittingly cause the closure of rural pubs through arbitrary imposition of standards, county councils demolish town pubs for unwanted road schemes, and Government is reluctant to become involved with long-overdue reforms of licensing, monopoly and labelling, CAMRA needs members as never before. If you've enjoyed traditional beer as a result of our past efforts, join us, and help us make sure that real beer, and real pubs, will survive.

Membership costs £7 (much less than the price of a Hertfordshire pint per month) per year, and members receive a monthly newspaper and special rates for publications like the Good Beer Guide. A membership application form will be found below.

(With acknowledgements to the Editors of "A Guide to Real Beer in Buckinghamshire")

JOIN CAMRA NOW

Full Membership £7 (£10 overseas)
Joint husband/wife membership £7

Standing Order Form

I/we wish to become a member/members of the Campaign for Real Ale (Limited). I/we agree to abide by the Memorandum and Articles of Association of the Campaign.

To _____
(Insert name of your bank here)

Please forward to Barclays Bank Limited, 3 High Street, St Albans (20-74-09) for the credit of CAMRA Ltd.
(Subscription Account) No. 50187887, now the sum of £7/10* and annually on this date until further notice.

Name _____ Bank A/c Number _____

Address _____ Bank Address _____

Signature _____ Date _____

*delete as appropriate

Send to Membership, CAMRA, 34 Alma Road, St Albans, Herts AL1 3BW

FIVE YEARS AGO

In the Newsletter of August 1979, the formation of CAMRA's national Pub Preservation Group was announced. The Group is now very much part of the CAMRA scene. Meanwhile, a spot of do-it-yourself pub preservation was being celebrated by Herts South branch, who paid a coach trip to the restored **Falkland Arms**, Great Tew in Oxfordshire, later to be temporarily re-named **Los Malvinas**. At the same time, the Guardian newspaper named CAMRA as "one of the few institutions worth preserving in these islands" — Britain, not the Falklands.

5 WHAT'S ON AT YOUR PUB

- | | |
|-----------|---|
| 1 August | Hatfield Hilltop. 8pm. Hilltop Country Music Club. Guests: George Moody + Country Squires. |
| 2 August | St Albans : Rose and Crown. 8.30pm. Traditional music session. |
| 6 August | Essendon : Rose and Crown. 8.15pm. Morris dancing — St Albans Morris Men.
Newgate Street : Coach and Horses. 9.15pm. Morris dancing — St Albans Morris Men. |
| 7 August | Tewin : Rose and Crown. Lunchtime. Traditional music session. |
| 8 August | Colney Heath : Crooked Billet. 8.30pm. Morris dancing — Cottonmill Clog Morris.
Hatfield : Hilltop. 8pm. Hilltop Country Music Club. Guests: Kentucky Country.
Tythenhanger : Barley Mow. 9.30pm. Morris dancing — Cottonmill Clog Morris. |
| 9 August | St Albans : Rose and Crown. 8.30pm. Traditional music session. |
| 13 August | Borehamwood : Mops and Brooms. 8.15pm. Morris dancing — St Albans Morris Men.
Ridge : Old Guinea. 9.15pm. Morris dancing — St Albans Morris Men. |
| 15 August | Hatfield : Hilltop. 8pm. Hilltop Country Music Club. Guests: Frank Jennings Syndicate. |
| 16 August | St Albans : Rose and Crown. 8.30pm. Traditional music session. |
| 20 August | Gustard Wood : Cross Keys. 9.15pm. Morris dancing — St Albans Morris Men. |
| 22 August | Hatfield : Hilltop. 8pm. Hilltop Country Music Club. Guests: Steve Wilson + Every Which Way. |
| 23 August | St Albans : Rose and Crown. 8.30pm. Traditional music session. |
| 29 August | Hatfield : Hilltop. 8pm. Hilltop Country Music Club. Guests: Julie Champion + The Nup End Mountain Boys. |
| 30 August | St Albans : Rose and Crown. 8.30pm. Traditional music session. |

Please send details of events (in no more than 15 words) by the 12th of the previous month to Peter Lerner, 14 Hazeldell, Watton-at-Stone, Herts.

Real folk in St Albans



Judging by the "What's on" column, which seems to consist almost entirely of folk club and morris dancing dates, a lot of folk song and dance enthusiasts read the Newsletter. These readers will be pleased to have advance notice of the annual FOLKEAST festival, which this year takes place on 20th October 1984 in St Albans.

Events will take place throughout the day, including free displays of morris and other traditional dances at the Maltings shopping centre, and workshops for dance, song and instrumental enthusiasts.

The day will climax with two evening performances. In the City Hall there will be a grand Barn Dance with Keith Uttley and Mosaic, while in St Albans College the amazingly entertaining Cosmotheke, together with local singers, will be in concert.

For tickets or further details, please send a stamped addressed envelope to Chris Green, 36 Roundwood Park, Harpenden, or phone Harpenden 4499.

Oh yes, and there will be real ale . . .

News from Stevenage: The **Discovery** in Chells, has handpumps for Truman Bitter and Best Bitter — but the Best Bitter pump is seldom in use while the publican tries to get the brewery to deliver the beer! Watney's new Combes Bitter is on sale at the **Longship**. Greene King IPA is available at the **Yorkshire Grey**, where the new saloon bar has just opened (and the public bar closed). Outdoor drinking facilities have been added to the **Two Diamonds** and the **White Horse**. If any members of the Force are reading this — Mickles is available on gravity at your very own police station bar (not open to the rest of us).

In Welwyn Garden City, the **Pear Tree** is selling Flowers Original, the **Chieftain** has Macs AK and the **Fairway Tavern** has Charrington IPA, Benskins Bitter and Courage Best Bitter.

In Waltham Abbey, the **Sun** in Sun Street has Burton Ale only.

The **Angel**, also in Waltham Abbey, is presently closed for renovation, and possibly extension as well. The **Bay Horse** in Old Hall Green is selling Flowers Original, Wethered Bitter and Benskins Bitter. Home-cooked food is available all week here, plus a full range of seafood. Wethereds and Flowers are also available, one at a time, at the **Railway Inn** in Buntingford.

The current range at the **Chequers**, Sandon includes Benskins Bitter and Ind Coope Bitter on pump, plus Burton Ale and Mickles Oak Bitter on gravity. Another **Chequers**, at Bragbury End, is rumoured to be planning extensive alterations, including conversion into a one-bar pub, to compete with a new Whitbread pub being built on a nearby housing estate.

Ruddles County is available at the **New Found Out**, Hitchin, the **Green Man**, Offley and the **Lytton Arms**, Old Knebworth. The **Plough** at Great Munden has added Greene King IPA to its range. The **Woodman** at Nuthampstead is selling Sam Smiths Old Brewery Bitter, for the summer only.

Two real ale 'losses' — the **Windmill**, Cheshunt and the **Highwayman**, West Watford no longer sell real ale. Still in Watford, Youngers IPA is available at the newly-opened **Shakers Wine Bar** in Market Street. The **Hammer in Hand** in Leavesden has returned to the real ale fold, with M & B Springfield bitter at only 65p per pint. The **Happy Man**, Rickmansworth is reported to be selling an excellent pint of Charrington IPA at 80p. Websters Yorkshire Bitter is on sale at the **King Stag** and the **Foresters**, both in Bushey. The **Artichoke** in Croxley Green is rumoured to be closing for three months during alterations.

Finally, a sad farewell from the villagers of Preston to the managers of their very own local, the **Red Lion**. Roy and Kathy Hart left the village-owned pub in July, to take over the tenancy of the **Twist & Cheese** in Lower Stondon.

QUICK ONES Continued

No roast swan

Local Councillors have turned down Whitbread's plans to double the size of the **Swan** at Pimlico, and to turn it into a "Roast Inn" restaurant.

The Council said that the proposals would alter the character of this small rural public house, and that the development would be contrary to Green Belt policies.

New Regional Organiser

Hertfordshire CAMRA branches welcome Steve Parry, of Reading, as the new Regional Organiser. Steve's area will additionally cover Berkshire, Buckinghamshire and Oxfordshire, and we hope he will become a familiar figure at local meetings. Steve succeeds another Reading man, Dave McKerchar.

The longest wait

Two local CAMRA members report that they had to wait an hour and forty minutes for their main course to be served in the bar of the Bull, Much Hadham, on a quiet Tuesday evening. In fact, they didn't ever receive their meal, for after 100 minutes they walked out, never to return again. Is this a record?

HERTFORDSHIRE NORTH BRANCH

Wednesday 1st August

Social at the Plough, Gt. Munden, 8pm

Wednesday 8th August

Branch Meeting at the Motte & Bailey, Pirton, 8pm

Wednesday 15th August

Pub of the Month Social at the Plough, Wallington, 8pm.

Wednesday 22nd August

Social at the Windmill, Charlton, 8pm

Wednesday 29th August

Social at the Robin Hood, Walkern, 8pm

Wednesday 5th September

Branch 10th Anniversary Social, at the Crooked Billet, Stevenage, 8pm.

Wednesday 12 September

Branch Meeting at the Eagle & Child, Whitwell, 8pm.

Contact Peter Clarke ☎ Stevenage 65957

HERTFORDSHIRE SOUTH BRANCH

Tuesday 21st August

Branch Meeting at the Cricketers, Redbourn, 8pm

Contact Eric Sim ☎ Hatfield 60647

WATFORD & DISTRICT BRANCH

Wednesday 1st August

Social at the Three Crowns, Bushey Heath, 8pm. All welcome.

Saturday 4th August

All day CAMRAMBLE in Brakspears Country. Phone branch contact for details.

Monday 6th August

Social/Games Evening at the Swan, College Road, Leavesden, 8pm

Wednesday 15th August

Branch Meeting at the Fox & Hounds, High Street, Rickmansworth, 8pm.

FREE PINT FOR NEWCOMERS.

Saturday 18th August

Visit to Watford Museum brewery exhibition, 11am. Lunch at the Escourt Tavern, Escourt Road. (see Quick Ones)

Wednesday 5th September

Watford Pub Crawl. Start at the Swan Inn, 216 Lower High Street, 8pm. All welcome.

Contact Tony King ☎ Watford 672587

MID-CHILTERN BRANCH

Thursday 9th August

Social at the Black Horse, Mobwell, 8.30pm.

Tuesday 21st August

Branch Meeting at the Green Dragon, Flaunden, 8.30pm.

Contact Pete Freeman ☎ Hemel Hempstead 69773

GARDEN OF THE MONTH by Groundsman

As the summer draws on, more use is made of pub gardens, by drinkers accompanied by children or by people who just want to sit outside and soak up the sun. The August Garden of the Month, at the **Rose and Crown**, Tewin, caters for most demands, as it has seats and tables directly in front of the pub as well as a wilder, wooded garden suitable for children. The only pity is that both areas tend to look out on to a large and rather unattractive car park.

Other outdoor drinking spots to have captured my attention in the past month, and both worthy of recommendation, are the sunken lawn of the **Buffalo's Head**, Puckeridge, and the riverside garden of the **Bull**, Wheathampstead. Needless to say, all of these pubs also serve well kept real ale.

The Hertfordshire Newsletter is produced by the Hertfordshire North, Hertfordshire South, Watford & District and Mid-Chilterns branches of the Campaign for Real Ale Ltd. The views expressed are not necessarily those of the Editor, CAMRA Ltd or its branches. The Editor gratefully receives articles or letters for publication. Send to **Cathy Totman, Flat 1, The Old Stables, Woodside, Hatfield, Hertfordshire.**

Subscriptions: £2.25 for 12 issues. Send to address above. Cheques/POs payable to CAMRA Herts Campaigning Fund.

Advertising: £7 per 2.5cm column. Artwork can be made up at extra cost. Contact **Eric Sim ☎ Hatfield 60647** for details.

COPY DATE FOR SEPTEMBER EDITION AUGUST 10th. FOR OCTOBER EDITION SEPTEMBER 14th.

Printed and filmset by D & S Graphics, 61/63 High Street, Ware, Hertfordshire.