

THE CAMPAIGN FOR REAL ALE

# THE HERTFORDSHIRE NEWSLETTER

FREE



SEPTEMBER 1984

CIRCULATION 5000

NUMBER 76

# SAVE OUR PUBS!

Let us compare two sets of figures. First, we hear that the nations brewers plan to spend £1,500 million between them, over the next three years, on their pubs.

Second, let us look at some recent brewery profit figures: Whitbread £95 million; Bass £84 million; Imperial Brewing and Leisure (Courage) £71 million; Scottish and Newcastle £55 million.

Conclusions: (1) the brewers are making enormous profits; (2) assuming that there are a total of some 50-60,000 pubs in the country, the brewers plan to spend some £25-30,000 each on "doing them up".

There can be no objection in a free society to companies making profits, although the high level of the brewers' profits does suggest that they might be able to sell their ale to the hard-pressed customer just a tiny bit more cheaply. No, the main concern lies with how they plan to invest their profits - in "improving" their pubs.

Recent developments in pubs give us no cause for confidence. We have "Vittle Inns", where beer as you and I know it is not sold. We have various forms of restaurant, Roasts, Beefeaters etc, where drinking and sociability take second place to food and more food. We have "Fun pubs", where the staff are encouraged to dance on the bar counters and entertain the customers.

How many pubs can you think of which need £30,000 spending on them? Precious few, except where the brewers have previously made such laughable mistakes that they have to be expensively eradicated. Can you conceive of how the expenditure of tens of thousands of pounds could possibly improve your local?

We have said it before in this Newsletter and we have no regrets in saying it again. The best brewers are those who choose good publicans, who maintain their pubs well, who provide their pubs with a reasonable level of facilities, and who allow their pubs to change gradually to reflect the needs and tastes of their customers. The introduction of themes, concepts, gimmicks or whatever you may wish to call them, may bring short-term profits, but brings long-term disaster, as good pubs are ruined, and thousands have to be spent righting the wrongs.

Quote of the month must be from David Knight, an executive of the Watney Trueman group who plan to spend no less than 100 million on a mere 1.500 pubs (over £65,000 each!) over the next four years:

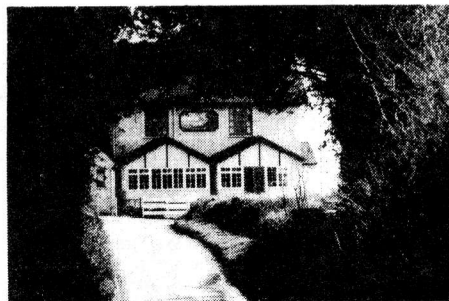
"We've got 18 product styles. They include ale houses, ethnic theme pubs, cafe bars, fashion bars, Pub 80's on an American style, off licences, family eating centres and so on".

You enjoy your "product styles", Mr. Knight. Just save a few decent pubs for the rest of us.

**CAMRA actively fights proposals to desecrate good pubs. We are the only organisation to do this, and to convince the brewers and other authorities that we are right, we need your help. To take part in a worthwhile consumer organisation, and to receive the other benefits of CAMRA membership, send £7 to Membership Secretary CAMRA, 34 Alma Road, St Albans, Hertfordshire AL1 3BW.**

Peter Lerner

## THE BARLEY MOW



### TYTTENHANGER GREEN

WE HAVE THE LARGEST SELECTION OF REAL ALES IN HERTFORDSHIRE

We also pride ourselves that they are all in the best of condition. Our barbecue is now open every night, weather permitting. Why not try our menu of hot and cold meals at lunchtime?

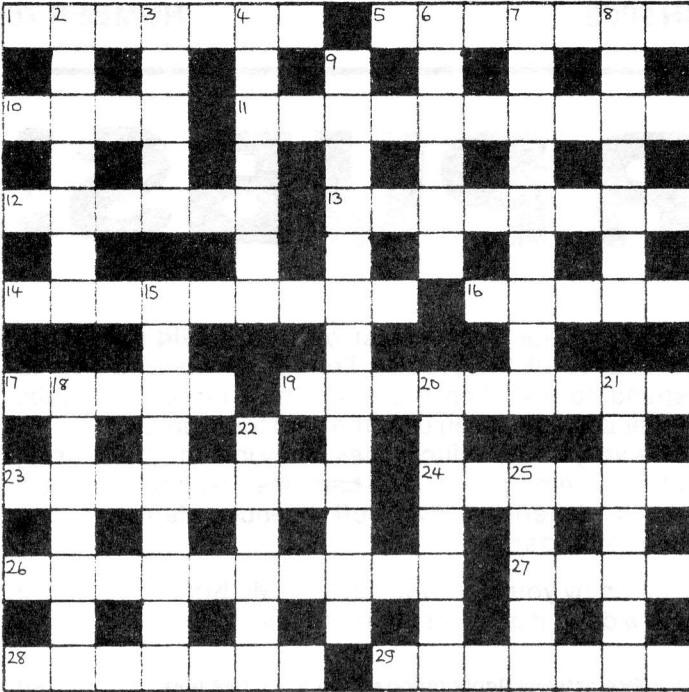
**PLEASE NOTE NO COACHES  
INCLUDING MINIBUSES**

# COMPETITION

The sender of the first correct solution opened on October 12th will receive a copy of 'A Guide to Real Beer in Buckinghamshire'. Please mark envelopes September Competition.

## 'ertfordshire 'oax

Each answer must have one letter removed before entry into the diagram. The definition part of the clue, and the figures in brackets, refer to the full answer. The cryptic part of the clue (anagrams, etc.) refers to the diagram entry.



### Across

- 1 Sporting feat from a non-drinking Little Richard (3-5)
- 5 Burton brewer, one replacing centre in the long run (8)
- 10 Planet near to partial eclipse (5)
- 11 If this you'd look gay, nice etc, dressed up (3-8)
- 12 Cut and burnt (7)
- 13 Last in score went in to secure Test opening (9)
- 14 What's joined at finding men in diplomacy (10)
- 16 Rift starts to segregate colleagues in Solidarity meeting (6)
- 17 Having a cough, perhaps, in commonplace style (6)
- 19 Name again right in secret arrangement (10)
- 23 They play in Edinburgh, with Spanish or Portuguese, around the north (9)
- 24 Faint-heart facing centre gets broken neck (7)
- 26 One refills Pilsener brew with hesitation (11)
- 27 A lot of papers advertise a family section (5)
- 28 Brewers we back replaced by both internal relatives (8)
- 29 Last month's cult smashed - put one foot down? (8)

### Down

- 2 It's useful for boxing expert in trial (3-5)
- 3 Consumed in rights to some degree (6)
- 4 What head Indian ruled over a hundred if demo got out of hand (8)
- 6 Embarrassed, like when caught in a bed (7)
- 7 Eric's tact is unsound for building designers (10)
- 8 Certain breeds of cattle are loners, wandering on top of Snowdon (8)
- 9 Len's daft, needs treatment for sinister quality (4-10)
- 15 Sounds like change to idiot's church decoration (5-5)
- 18 Kind of ale made from plant in east central Derby, brewed twice (4-4)
- 20 Car in about turn, for example - fill up again (8)
- 21 Symbol of Fremilins' ten pale brews (8)
- 22 Less stout can go to the north-east, right? (7)
- 25 Tool for producing out slice (5)

The winner of the July competition was Barry Bonnicks of Maple Cross. Congratulations too to all the other entrants who correctly guessed the answer to 18 down, without much help from the clue. The correct solution was: Across - Rotgut, Hellfire, Egg-beater, Toper, Retie, Guide Book, Aerated, Rancid, Has Been, Frightful, Barge, Enter, Overexert, Decimate, Edge On. Down - Rye Bread, Tight, Unelected, Earlier, Litre, Improvise, Eureka, Staged, Realistic, Nose-bleed, Intent On, Defrost, Holder, Afield, Harem, Reeve. The initial letters form the phrase 'Real Draught Beer in Hertfordshire'.

# QUICK ONES

## THE SCANDAL OF SHORT MEASURE

**CAMRA, as a consumer organisation, is rightly concerned that pub customers always get value for money. This is why we were shocked to read, in a recent national newspaper report, that trading standards officers in 6 metropolitan areas (not including Hertfordshire) have found that almost 95% of pints served in pubs are short measure.**

**A pint (for those who are not metricated and left school more than a little while ago) is 20 fluid ounces. Yet the officers found that 58% of beer sold was between one and two fluid ounces short, and that over 8% were more than two fluid ounces short.**

**We stress that this survey does not include Hertfordshire, and that we have no evidence that local landlords are giving short measure. But for those who, in their travels, find that their pint is lacking, we advise you straight away to return it politely to the landlord and ask for it to be topped up.**

**The survey found that on average, drinkers were losing 4p for every pint pulled. If you feel that you have 4p to give away every time you order a beer, we suggest that you ask for a full pint and then put 4p in the pub's charity box. That way, everyone will gain.**

Peter Lerner

## Hertfordshire Hosts

The Host Group, CAMRA's arch enemies as some people believe, have now arrived in North Herts. So far they have converted two pubs; the **Pelican** in Letchworth has become **Ebenezers**, while the **Yorkshire Grey** in Stevenage has retained its old name. The changes are as different as chalk and cheese. Whereas **Ebenezers** has become extremely plush with deep pile carpet, potted plants and art deco lamps, floorboards and polished wood are the order of the day at the **Yorkshire Grey**.

I'm afraid that, much to some people's dismay, I think both pubs have been improved. The VIP lounge style at **Ebenezers** is excellent to take your mother to, while I felt at home in the **Yorkshire Grey**, where a marvellous inglenook fire has been exposed which divided the two bars and will be a real draw in winter.

As for the beer: the **Yorkshire Grey** has Greene King IPA on handpump and Abbot on gravity. No change there, but a convert in **Ebenezers**, previously an all-keg establishment which now has Websters Yorkshire Bitter. If this is the standard so far, I don't think we have too much to worry about.

Peter Clarke

## Disappearing Hosts

**While the Host Group are busy converting pubs, the group's own hosts in the Stevenage New Town area seem to be disappearing. The group own five houses - the Longship, Discovery, Gamekeeper, Man in the Moon and Pyramid - and in the last six months all have had a change of landlord.**

**Asked about this strange coincidence, John Fleming, general operations manager for the Group, explained that it was in the main due to the unruly element in the town. While this may be the case, it doesn't seem to affect other breweries' pubs in Stevenage...**

## Oops - sorry!

In last month's Newsletter, in the list of 'Newsletter pubs in Watford & District area', a terrible omission was made - I left out the **Villiers Arms** in Oxhey. My apologies to a pub which has taken the Hertfordshire Newsletter since the very early days (and I hope will still do so in the future!)

Jim Axford

## FLINTS WINE BAR

Market Hill, Royston

☎47512

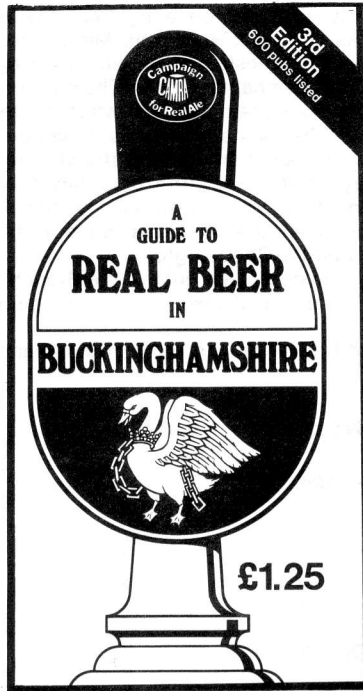
**MARSTON PEDIGREE & OWD RODGER**  
on handpump

Home-cooked food available all day  
Monday to Saturday

Closed Sunday

## LOCAL GUIDES

### REAL BEER IN BUCKINGHAMSHIRE



Our western neighbours in Buckinghamshire have just published the third edition of the CAMRA Guide to Real Beer in the county, which lists 600 pubs from Marlow to Milton Keynes, from Beaconsfield to Buckingham.

An incredible 84 different real ales are now available in the county, and each pub is carefully described, with the aid of clearly drawn maps. There is an excellent nostalgic recollection of the bygone breweries of Bucks with some contemporary pub photos, and the descriptions of today's pubs are full of interest. Where is there an annual bra-burning evening? Where can you play devil-among-the-tailors? And which pub was previously a slaughterhouse?

All the answers are in CAMRA's new Buckinghamshire beer guide, an essential companion for anyone who has business or pleasure in that county. Copies are available by post for £1.45 from Peter Morris, 11 Meadow Rise, Lacey Green, Aylesbury, Bucks.

PL

3

## PUB OF THE MONTH

### The Bull, Great Offley

The small village of Offley is a beer drinker's paradise, with five drinking establishments still surviving. It is a somewhat food-orientated village, with three of the pubs boasting restaurants. The **Bull**, which once stood in the shadow of the Carpenters Arms, long since closed, is the village local.

Don and Doreen Abbot have been running the **Bull** for over twenty years, and Don remembers selling Manns Bitter straight from the barrel when he first came to the pub. Glad to say that this Watney house has turned full circle, and now dispenses both Websters Yorkshire Bitter and Manns IPA - quite rare for the area.

This former bakery is well worth a visit, so come along on Wednesday 19th September and see why it's been chosen as Pub of the Month.

Peter Clarke

## QUICK ONES continued

### A sad farewell

It is with great regret that we at Mid-Chilterns branch say farewell to to Robin and Mary Cox, landlord and landlady of the **Queens Head**, Long Marston, near Tring, due to ill health.

In the eight years that Robin and Mary have been at the pub several changes have been made, including vast extensions to cellar and bar, but always maintaining the character of the pub with its genuine flagstone floor. Robin - a fanatical Watford supporter who gained national fame when he renamed the pub the Elton John Arms, just for the Cup final - currently serves ABC Bitter, Everard Tiger, Draught Bass, Morrell Light and Ind'Coop Burton Ale, as well as Bulmers and West Country Cider. His wife Mary supplies a wide selection of hot and cold food, which is excellent value for money.

Robin and Mary will be leaving on the 24th September. On Tuesday 11th, Mid-Chilterns Branch will be meeting here for a social, and to say goodbye to one of the best landlords in the area. Members new and old are welcome to join us.

We wish Robin and Mary all the best, and hope to see them at our meetings in the future. Thank you both for the great hospitality you have given us.

Pete Freeman

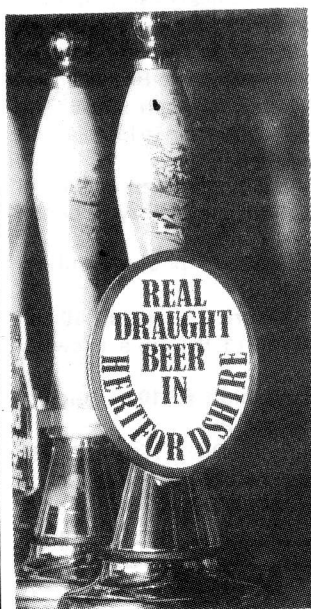
### FIVE YEARS AGO

September 1979's Newsletter happily reported that Greene King had reprieved their Biggleswade XX Dark Mild, after increased sales following extensive local campaigning by CAMRA. XX is still on sale today, so it's thanks to local landlords and drinkers, thanks to CAMRA, and particular thanks to Greene King, for keeping faith with the sadly small minority of their customers who like to drink this under-rated brew. Appropriately, the first prize offered to the winner of Herts South branch's 1979 Treasure Hunt was..... a pin of XX.

### PLANNING NEWS

Recent applications include a proposal by Whitbread to add an extension at the **White Horse**, Tea Green. Courage want to add a timber and glass annexe to form a family room at the **Horns**, Watford, while Ind Coop Benskins propose to make various alterations at the **Plough**, Hertford, including the addition of a conservatory and canopies.

## ..and don't forget



### YOUR LOCAL GUIDE

#### REAL DRAUGHT BEER IN HERTFORDSHIRE (1983 edition)

Lists every known real ale pub in the county, including off-licences

Plus articles, maps and brewery information

£1.20 (plus 20p p&p) from:

Dave Andrews  
87 Old London Road  
St Albans, Herts

## THE ROYAL OAK, BUSHEY

Free House

★ 6 Real Ales □ Food ★  
★ Guest Beers ★

Restaurant and carvery now open

Reservations preferable ☎ 01-950 2865

SPARROWS HERNE ★ ON THE A411

## Greene King Lag Behind

As CAMRA's Hertfordshire North Branch celebrates its 150th pub selling real ale, it's time to drag out the old Newsletter slide rule and find which breweries are doing their bit for real ale, and which are not. First, the facts and figures.

OWNER	REAL ALE PUBS	NON-REAL PUBS	% REAL
Allied (Ind Coope/Benskins)	25	0	100
Rayment	3	0	100
Free Houses	28	4	87.5
Charrington	6	1	85.7
Whitbread	34	12	73.9
Grand Met. (Watney/Truman)	5	3	62.5
Wells	3	2	60
McMullen	17	12	58.6
Greene King	29	45	39.2
<b>TOTAL</b>	<b>150</b>	<b>79</b>	<b>65.5</b>

The star performance is undoubtedly that of Ind Coope-Benskins, who have gone traditional in a big way, and have sensibly provided their customers, in many pubs, with a choice of different real ales. The high proportion of free houses selling real ale can only indicate, if proof is needed, that where choice is allowed, real ale is nearly always chosen.

But down at the bottom of the league table, a surprise is in store. The only brewery to provide less than half its pubs with real, non-gassy, cask-conditioned beer is Greene King. Despite an excellent image, and a superb range of beers when served by traditional methods, the Biggleswade brewery seems reluctant to allow anything other than a minority of its customers to enjoy this excellence.

Back in 1982, Martyn Cornell pointed out in this Newsletter that in CAMRA's very first local real ale guide, in 1976, 22% of Greene King's North Herts pubs offered real ale, while only 6.3% of their competitors' pubs offered the real stuff. While Greene King's proportion has increased with snail-like rapidity, the others have leapt forward to a sparkling 78%.

Greene King's North Hertfordshire pubs are some of the nicest and most unspoilt in the county - a superb traditional drinking environment. But a little more real ale might persuade many more customers to use them.

Peter Lerner

## Good beer is a tradition with us.

The McMullen family have been brewing beer since 1827, making us Hertfordshire's oldest independent brewery.

Our AK Mild is as popular today as it was when it was first brewed in 1829. Another best seller is Country Bitter. Both are traditionally brewed. Cask conditioned. Full flavoured.

We are still the same small family

### McMULLEN

Brewers in Hertfordshire since 1827

business we've always been. Still brewing traditional beer in Hertford. Every bit as genuine as we were when we started.

And the kind of welcome you get in our 150 or so pubs is as welcome as it's always been.

That's kind of traditional too.



## Mid-Chilterns - a Tale of Two Counties

Although a mainly rural area covering small towns and villages in south-east Bucks and west Herts, the Mid-Chilterns branch area also includes Hemel Hempstead, Berkhamstead and Tring in Herts, and Chesham and Amersham in Bucks. The northern boundary runs past Slapton and the southern boundary stretches as far as Denham, both in Bucks. The eastern area is bounded by the A405, A41 to Kings Langley and then north to the M1 and A5 as far as the county boundary. In the west, the boundary follows the A40 to Beaconsfield and then turns north west to the A413 near Great Missenden, on to Wendover and then goes north east to take in Tring, Long Marston and Cheddington.

There is a high ratio of real ale pubs in the Branch area. Of the 138 pubs in Herts 115 sell real ale, whilst 112 of the outlets in Bucks sell the real thing.

A breakdown of breweries and pubs in the Branch area is given below.

Brewery	No. of pubs	Real ale pubs	Non-real pubs
BENSKINS	106	106	-
IND COOPE	38	22	16
COURAGE	20	17	3
WHITBREAD	14	9	5
ABC	10	9	1
WETHERED	9	9	-
BASS			
CHARRINGTON	8	5	3
WATNEYS	7	6	1
WELLS	4	3	1
SCOTTISH & NEWCASTLE	3	3	-
TRUMAN	3	3	-
GREENE KING	1	1	-
McMULLEN	1	1	-
FREE HOUSES	40	33	7
<b>Total</b>	<b>264</b>	<b>227</b>	<b>37</b>

Barry Bonnick

## BOOZER'S BOOKSHOP

IF YOU are building up your own beer drinker's library, here are a few volumes you should not be without:

- The Traditional English Pub — A Way of Drinking by Ben Davis. **£12.50.** (An expert's eye view of our famous institution, complete with fine photographs).
- Bricks and Beer, **£2.** (A well-illustrated history of pub architecture produced for a London exhibition).
- A Good Head for Beer by Gareth D. John. **£6.50.** (The latest report on the British brewing industry).
- Time Gentlemen Please! by CAMRA's Pub Preservation Group and SAVE. **£3.50.** (A critical examination of the fate — and future — of many of our finest houses).
- Pub Preservation Booklet. **90p.** (The Pub Preservation Group's guide to the threats facing the British pub).
- Pocket Guide to Beer by Michael Jackson. **£2.95** (The instant handbook for drinkers who wish to learn about beers from around the globe).
- Hops and Hop Picking by Richard Filmer. **£2.65** (All you ever wanted to know about the history of beer's bitter ingredient).
- Capital Ale by Roger Protz. **£1.75** (A book describing 200 of London's best pubs).
- Brewing and Breweries by Maurice Lovett. **£1.10** (An easy-on-the-eye journey round Britain's brewing heritage).
- Cidermaking by Michael B. Quinion. **£1.10** (A guide to the traditional delights of scrumpy).
- The Traditional Cider Directory by David Kitton. **£3.15.** (An invaluable new guide to scrumpy, the pubs which sell it and the people who produce it).

All prices include postage and packaging, and are available from CAMRA, 34 Alma Road, St. Albans, Herts AL1 3BW. Make your cheques payable to CAMRA Ltd.

## BEER FESTIVALS

Following the success of our own local Chiltern Beer Festival, the Newsletter is pleased to point readers in the direction of other CAMRA beer festivals in neighbouring counties.

Firstly, **Cambridge** is to be the scene of a Beer Festival at the Guildhall from 25th to 29th September.

The Corn Exchange, **Bedford** will be accommodating the **7th Bedford Beer Festival**, from 4th to 6th October.

For those who like a good day of real ale and live entertainment, may we recommend the **3rd Pig's Ear Beer Festival** in **Bethnal Green**, London E2. Organised by CAMRA's East London and City Branch, this celebrated event is held at York Hall, Old Ford Road, Bethnal Green (Central Line tube), and this year's dates are 17th to 20th October. Admission is free at lunchtimes, 70p evenings, and entertainment will include the Temperance Seven.

Make a date now, and remember that CAMRA members obtain advance notice and full information about all regional beer festivals, via our monthly newspaper "What's Brewing". Why not join us, and see what you've been missing?

## GARDEN OF THE MONTH by Groundsman

Clear winner this month is the extensive garden at the back of the **Cherry Trees**, Wheathampstead, a safe and well-kept delight for children and adults. Runner-up is the **Sword in Hand** at Westmill, whose garden includes several fine old trees and a modern brick barbecue. Special mention should also be made of the proudly-tended roses at the **Rest and Welcome**, Haultwick. Congratulations too to the **Hope & Anchor**, Welham Green, recent winners of the Courage north east area large garden competition.

Two gardens to watch out for next year, at present in course of preparation, are those at the **Waterford Arms**, Waterford, and the **Axe and Compasses**, Braughing.

As summer draws to a close, I hope this column has introduced you to some pubs where the best of ale can be enjoyed whilst sunbathing, relaxing, or fondly watching your (or other peoples') kids playing. Let's hear about some of our readers' favourite pub gardens next year.

## JOIN CAMRA NOW!

### Membership form

I/We wish to become a member/members of  
the Campaign for Real Ale Limited

I/We agree to abide by the Memorandum and  
Articles of Association of the Campaign

I enclose £7 (£10 overseas) for a year's full membership   
We enclose £7 for a year's joint full membership

FULL NAME(S) .....

FULL POSTAL ADDRESS .....

Date .....

Cheques should be made payable to Campaign for Real Ale Limited  
Send to Membership, CAMRA, 34 Alma Road, St. Albans,  
Herts AL1 3BW

Peter & Lesley Reynolds welcome you to



**THE STAR INN**  
FURNEUX PELHAM



Rayments BBA ★ Greene King KK & Abbot

GOOD HOME-COOKED FOOD  
MONDAY TO SATURDAY

☎ Brent Pelham 227

5

## WHAT'S ON AT YOUR PUB

- 6 Sept **St Albans:** Rose and Crown. 8.30pm. Traditional music session.
- 7 Sept **Stanstead Abbots:** Crown. 8pm. Hoddesdon Folk Club. Guest: Vin Garbutt.
- 10 Sept **Digswell Hill:** Red Lion. 8.30pm. Morris dancing - St Albans Morris Men.
- 13 Sept **St Albans:** Rose and Crown. 8.30p.m. Traditional music session.
- 14 Sept **Stanstead Abbots:** Crown. 8pm. Hoddesdon Folk Club. Guest: Jez Lowe.
- 16 Sept **St Albans:** Garibaldi. Lunchtime traditional music session.
- 20 Sept **St Albans:** Rose and Crown. 8.30pm. Traditional music session.
- 21 Sept **Puckeridge:** Buffalo's Head. From 8pm. Cowboy and Indian Night. Guest beers from north of England.  
**Stanstead Abbots:** Crown. 8pm. Hoddesdon Folk Club. Guests: Calennig.
- 27 Sept **St Albans:** Rose and Crown. 8.30pm. Traditional music session.
- 28 Sept **Stanstead Abbots:** Crown. 8pm. Hoddesdon Folk Club. Singaround.
- 30 Sept **St Albans:** Garibaldi. Lunchtime traditional music session.

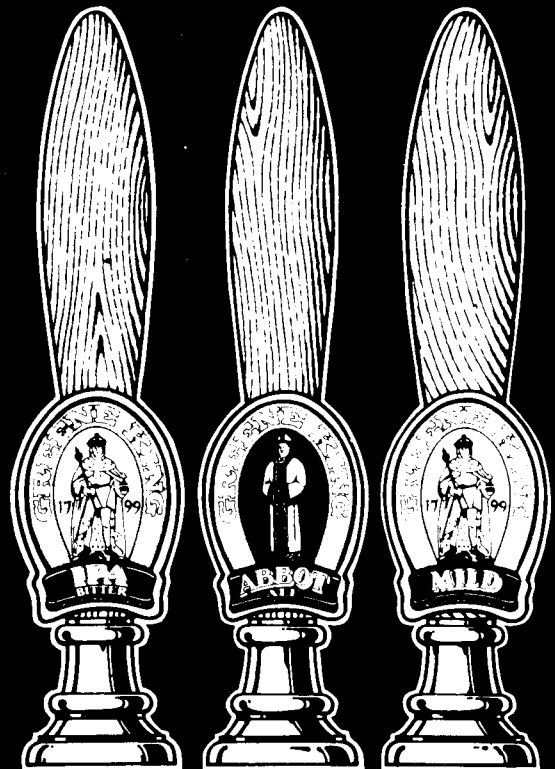
Please send details of events, in not more than 15 words, by the 10th of the previous month to Peter Lerner, 14 Hazeldell, Watton-at-Stone, Herts.

### BEER BARREL - OFF LICENCE

Under new management - formerly the 'Jug & Firkin'  
67 Albert Street, Stevenage Old Town

REAL ALES TO TAKE AWAY

ADNAMS · EVERARD · MARSTON · BANKS & TAYLOR



NEED WE  
SAY MORE?

Due to a strike at Allied Breweries' Romford plant, supplies of Ind Coope and Benskins cask beers have recently been coming from the group's Burton-on-Trent brewery. This may explain reports of the beers being hard to find in some pubs at the moment - notably two Stevenage outlets, the **Chequers**, Bragbury End and the **Squirrel** in Chells Way, where John Bull keg is offered as an alternative. Or is this the first sign of an underhand John Bull promotion kick? Still in Stevenage, the new Poplars housing development should soon be getting a brand new pub, which will be a Samuel Smith house.

The new Rayment livery is springing up all over North Herts, as the brewery continue their run of redecorations and improvements to their pubs. The **Star** in Furneux Pelham has smart new coat of paint in and out - and double the number of entrances! - whilst the **White Horse** at Wareside has been undergoing major refurbishment, and no longer gives the discouraging impression of falling down.

The **Railway Bell** in New Barnet, an Ind Coope house, is temporarily closed, having been sold to Marler Bros. as a free house. The pub is due to re-open this month, re-named the **Rat and Parrot**. Unconfirmed rumours suggest that the **Lord Nelson** in Barnet may have been sold by Ind Coope to Greene King. A new real ale outlet is the **Artichoke** in Elstree High Street, now selling Ind Coope Bitter on handpump. The **Hammer in Hand**, also in Elstree, has M & B Springfield Bitter.

Current range at the **Turnford Massey** in Turnford, near Cheshunt, is Rayment BBA, Greene King IPA and Charrington IPA. The **New River Arms**, also in Turnford, no longer sells real ale. The **Old Star** in nearby Wormley appears to be selling Macs AK only - no Country Bitter seen there lately.

The **White Horse** at Leverstock Green, near Hemel Hempstead, has Flowers Original, and the **Plough** has Ruddles County, to add to their existing range. The **White Hart** in nearby Bedmond has Ind Coope Bitter on handpump.

The **White Horse** in Weston now has Greene King IPA on handpump. The **Waterford Arms** in Waterford, north of Hertford, has the full range of Greene King cask ales on handpump: KK light mild, XX dark mild, IPA and Abbot.

A warm welcome to the new managers of the **Red Lion**, Preston, John and Anne Martin. John and Anne were previously in charge of the **Mash Tun** in Winchester, Sussex, a home-brew pub. Can we look forward to a similar venture at the **Red Lion**?

## HERTFORDSHIRE NORTH BRANCH

### Wednesday 5th September

Branch 10th Anniversary social at the Crooked Billet, Stevenage, 8pm.

### Monday 10th September

Darts v. North Beds branch at the Black Horse, Ireland, near Shefford, 8pm

### Wednesday 12th September

Branch meeting at the Eagle & Child, Whitwell, 8pm

### Wednesday 19th September

Pub of the Month Social at the Bull, Great Offley, 8pm

### Monday 24th September

Visit to McMullens Brewery. Numbers limited - contact Peter Clarke.

### Wednesday 26th September

Social at the Bay Horse, Old Hall Green, 8pm.

Contact Peter Clarke ☎ Stevenage 65957

## HERTFORDSHIRE SOUTH BRANCH

Contact Eric Sim ☎ Hatfield 60647

## WATFORD & DISTRICT BRANCH

### Wednesday 5th September

Watford pub crawl. Start at the Swan, 216 Lower High Street, 8pm. All welcome.

### Saturday 8th September

Mystery minibus tour - all day. Phone contact for details.

### Wednesday 19 September

Branch Meeting at the Wheatsheaf, 312 Lower High Street, Watford (upstairs room), 8pm. Free pint for newcomers.

### Wednesday 3rd October

Pub crawl of Abbots Langley /Leavesden. Start at Royal Oak, Kitters Green, Abbots Langley, 8pm.

### Wednesday 10th October

Social at the Villiers Arms, Oxhey, 8pm.

Contact Tony King ☎ Garston 672587

## MID-CHILTERN BRANCH

### Tuesday 11th September

Social at the Queens Head, Long Marston, 8.30pm. (See Quick Ones)

### Thursday 20th September

Anti-social. Start Greyhound, Chalfont St Peter, 8.30pm

### Thursday 27th September

Pub crawl of Potten End. Meet Red Lion, 8.30pm.

Contact Pete Freeman ☎ Hemel Hempstead 69773

# Pints 'n' Litres

REAL ALES TO TAKE AWAY

Everard ● Greene King ● Victoria

Adnams ● Ruddle ● on draught

BRIGHT POLYPINS AND CASKS ALWAYS

AVAILABLE

from 55p per pint

GLASS LOAN ● OPTIC HIRE

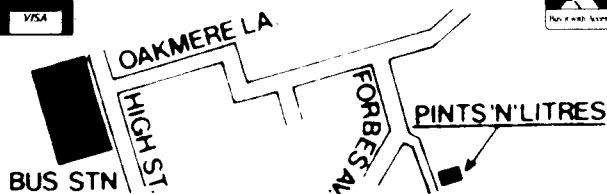
BAR SERVICE AND CATERING AVAILABLE

at 12 Crescent West (next to Hadley Wood station)

☎ 01-440 3404

and 6 Eastfield Parade, Forbes Avenue, Potters Bar

☎ Potters Bar 55585



# BLAKES

96 Queens Road, Watford

5 Real Ales ● Draught Cider ● Wines

GOOD FOOD AT ALL TIMES

Open pub hours, 7 days a week

## HAPPY HOUR

Sunday 12 - 2pm

Mon - Fri 5.30 - 6.30pm

25% off all drinks

The Hertfordshire Newsletter is produced by the Hertfordshire North, Hertfordshire South, Watford & District and Mid-Chilterns branches of the Campaign for Real Ale Ltd. The views expressed are not necessarily those of the Editor, CAMRA Ltd or its branches. The Editor gratefully receives articles or letters for publication.

Send to **Cathy Totman, Flat 1, The Old Stables, Woodside, Hatfield, Hertfordshire.**

**Subscriptions:** £2.25 for 12 issues. Send to address above. Cheques/POs payable to CAMRA Herts Campaigning Fund.

**Advertising:** £7 per 2.5cm column. Artwork can be made up at extra cost. Contact **Eric Sim ☎ Hatfield 60647** for details.

**COPY DATE FOR OCTOBER EDITION SEPTEMBER 14TH. FOR NOVEMBER EDITION OCTOBER 12TH.**

Printed and filmset by D & S Graphics, 61/63 High Street, Ware, Hertfordshire.