

FREE



THE CAMPAIGN FOR REAL ALE

THE HERTFORDSHIRE NEWSLETTER

NOVEMBER 1984

CIRCULATION 5000

NUMBER 78

THE PRICE OF A PINT

CAMRA's national newspaper, *What's Brewing*, reported last month on a pub price survey carried out in August, in 8 regions of England and Wales.

As expected, central London proved the most expensive area, with real ale on average costing 85½p per pint, compared with 63p in the cheapest region, the Midlands. A pint of cask beer in Clifton Inns' **Valiant Trooper** in London's West End could cost you £1.03, compared to 52p for Ansell's in Birmingham's **Anchor**.

The price difference of 15 - 20p per pint between the north and south of England has always been justified by the brewers on grounds of the south's higher overheads - rent, rates, wages etc. But this theory is disproved when the price of spirits is also surveyed. A pint of beer costs 23½ per cent more in London than in the Midlands, but the difference between the areas in the price of a short is only 9 per cent.

Perhaps, as *What's Brewing* comments, it is time that the brewers - especially the bigger ones - admitted the truth, that they simply squeeze more profit out of the affluent south. If they tried to do the same in the North or Midlands, disgusted drinkers would turn to clubs.

Here in Hertfordshire prices do not reach the London level, but to find a pint costing less than 70p is a rarity, while such prices are commonplace north of a line from the Bristol Channel to the Wash.

NB: the survey also proves what CAMRA has always said - that the minority of drinkers who prefer lager to beer are being ripped off. Throughout the country, a pint of lager will cost you up to 10p more than a pint of beer.

BLAKES

96 Queens Road, Watford

**Morrells • Brakspears • Hook Norton
Draught cider • Wines**

Plus two unusual guest beers

GOOD FOOD AT ALL TIMES
Open pub hours, 7 days a week

HAPPY HOUR

Each evening
5.30-6.30pm

25% off all drinks

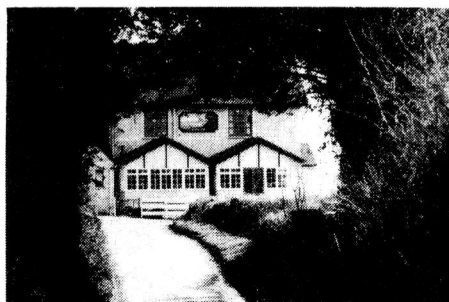
Sunday
12-2pm

How about another beer, Mr. Rayment?

Our friends at Rayment's brewery tell us that while sales of their ever-improving BBA are holding up very nicely, thank you, there is still quite a bit of spare capacity left at the Furneux Pelham brewery. We at CAMRA have an idea for you, Rayment's. Now that you are re-decorating your pubs so smartly with the new "Greene King? Never heard of them" livery, how about adding another cask beer to your range? After the promise of the outside of the pub, with Rayment's insignia and logos everywhere, it is something of an anti-climax to find only one Rayment's brew inside, overwhelmed by several from guess who, Greene King. A special Rayment's tied-pub only brew would go down very well with aficionados of your beer, and would cause people actively to seek out your pubs. We would suggest a premium bitter, OG around 1042, to fit in nicely between BBA (1036) and Abbot (1048). You could call it Draught Pelham.....

It is with deep regret that we report the death of Ann Hughes, landlady of the Crooked Billet, Colney Heath, and our sympathies go to David and his family. Although we may have had a few differences, this can in no way detract from the fact that Ann helped in running a real pub with a traditional atmosphere that is sadly lacking in many pubs today. We will always remember the support that Ann and David have given to the South Herts branch of CAMRA.

THE BARLEY MOW



TYTTENHANGER GREEN

WE HAVE THE LARGEST SELECTION OF
REAL ALES IN HERTFORDSHIRE

We also pride ourselves that they are all
in the best of condition. Why not try our menu
of hot and cold meals at lunchtime - what
about pre-Christmas lunch?

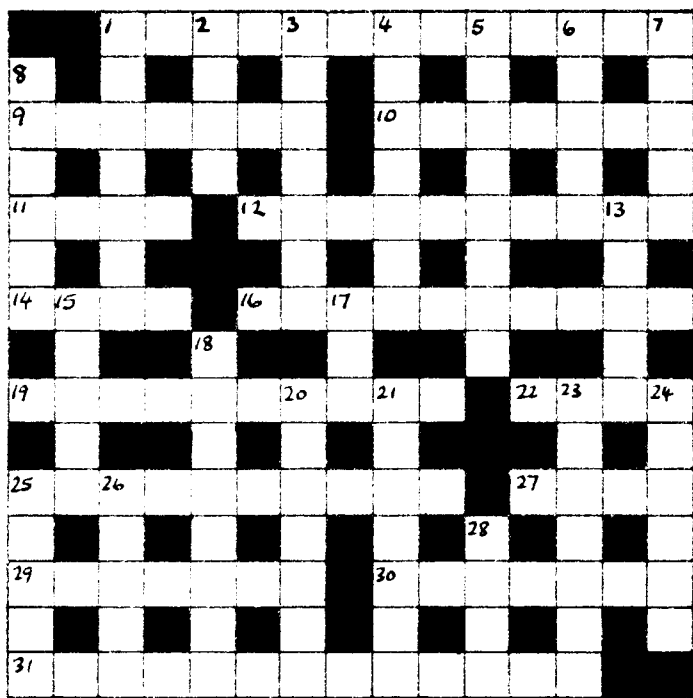
**PLEASE NOTE NO COACHES
INCLUDING MINIBUSES**

COMPETITION

2

QUICK ONES

The sender of the first correct solution opened on December 14th will receive a copy of 'Hops and Hop-picking' by Richard Filmer. Please mark envelopes November Competition.



Across

- 1 Pub where golfers like to be - in the 19th.... (3,2,3,5)
- 9 and two things they aim at with CAMRA, we hear (7)
- 10 Couple get right in, that's plain (7)
- 11 One of those found in Bulls Green, Letchworth or Northchurch (4)
- 12 Car parked inside worries home-brew pub (6,4)
- 14 Kind of match in Newgate Street (4)
- 16 Like a star in radio's late broadcast (10)
- 19 Plough close to one across here (10)
- 22 Throw out some villainous thugs (4)
- 25 Blonde with a birthmark? (10)
- 27 Cost of travelling a long way east (4)
- 29 One in a French peninsula keeping in line (7)
- 31 Star's location in the east is the source of best Burton ale (7,6)

Down

- 1 They come from inside pubs on both sides of a road (7)
- 2 Corner - order to proceed not given? (4)
- 3 They have eyes although virtually unnecessary (7)
- 4 Work quietly in difficult situation - it supports the plant's growth (3,4)
- 5 Bramfield pub loses one, one of third generation (8)
- 6 Mistake chopping head off in fright (5)
- 7 Wants to find dense jungle (5)
- 8 Result of boiling hops in contents of butt (6)
- 13 Implies sufficient resources (5)
- 15 Former performance absolutely correct (5)
- 17 Jolly Sailor's last servings of breakfast, tea and dinner (3)
- 18 Means to display endless coins - in whose collection? (8)
- 20 Demand too much - if it's 0 - 5 you have extra problem (7)
- 21 Doncaster racecourse contains area for spectators (7)
- 23 It's said you replaced skull cap with metal (7)
- 24 Four less than this score (6)
- 25 Teachers stick (5)
- 26 It's less common, somehow - education always starts with the three 'R's (5)
- 28 He's no longer found in Buntingford or Iran (4)

The winner of the August competition was Ian Morley of Welwyn Garden City. The correct solution was: Across - Abut, Fox and Hounds, Lees, Brown Ale, Ore, Arc, Eat, Agents, Kip, Met, Observe, Oddment, Why, Pew, Manure, Two, Act, Rat, Birthday, Malt, Electric Pump, Beer. Down - Courage Best, Darwin, Adnams, Poleaxe, Unlock, Asleep, Use, Tanners Arms, Three, India, Mew, Toy, Hot Bath, Porter, Watney, Martin, No Hope, Ale.

Continued in next column

Calendars - the Great American Nightmare?

The July issue of the Hertfordshire Newsletter carried a profile by John Hurrell of Vittle Inn's new £1 million American-style cafe bar in Garston, **Calendars**. To refresh your memories, it's the one with the red Cadillac jutting out of the inside wall at head height, with lights flashing in time to the disco music. In a recent local press article, the Managing Director of Vittle Inns, John Lee, reports that this American Dream has been a great success. "We have been serving an average of 2,300 meals a week since opening - and we're pretty pleased with that," he said. "The concept is to make a fun place to go and eat and drink. We hope we are creating in the community a social centre the public house used to fulfil but doesn't now."

Clearly **Calendars** is popular - at least till the novelty wears off. Undeniably it is different, but as a rival to the public house there is surely no comparison. Judging by the vast numbers of people passing through, comparison to a motorway service station would seem more apt!

Mr Lee has obviously never experienced the convivial atmosphere of a real local. He does not realise that, in a genuine social centre, people are still drawn together not by the lure of gimmicks, dreamt up by some ivory-towered marketing men, but by the knowledge that in their chosen drinking spot they will find old friends, new friends, a welcoming atmosphere and maybe even.....a pint of beer.

Penny Marriott

New Brews from Mac's?

The newly-published 1985 *Good Beer Guide* includes some information that may be new to most of us - Mac's are now producing three new brews, which are Mac's Real Ale, Mac's Gold and Black Mac. We are, of course, referring to the recently set up Roc Mac Brewery of Stoke, New Zealand. Meanwhile our very own McMullen's of Hertford advise us that Steingold and Hartsman lagers now amount to 37% of their draught beer sales.

FISHY RAFFLE AT THE WINDMILL

Landlord Tim Hunter of the **Windmill**, Charlton, kindly offered to supply a mystery prize for the CAMRA raffle held at the Herts North Branch social there on 22 August.

Tim had been sea-fishing during the day and arrived back at the pub in the evening with the prize: a large bag of fresh mackerel and cod.

A bewildered Di Clarke bought the winning ticket, and shared the generous helping with friends. Branch and pub regulars enjoyed a whale of a night, and the raffle made £3.25 for Branch funds.

Thanks, Tim!

Steve Barber

Peter & Lesley Reynolds welcome you to



THE STAR INN

FURNEUX PELHAM



Rayments BBA ★ Greene King KK & Abbot

GOOD HOME-COOKED FOOD
MONDAY TO SATURDAY

☎ Brent Pelham 227

from previous column

The winner of the September competition was R A Foreman of Bexleyheath. The correct solution was: Across - Hat-trick, Marathon, Earth, Eye-catching, Sheared, Twentieth, Attachment, Schism, Chesty, Rechristen, Hibernian, Chicken, Replenisher, Sheaf, Deutch, Down - Tea-chest, Rather, Chiefdom, Abashed, Architects, Hornless, Left-handedness, Altar-cloth, Herb-beer, Recharge, Elephant, Thinner, Chisel. All the H's were omitted from the diagram.

Getting organised at the Plough

How many pubs in Hertfordshire, or indeed in the country, can boast a real Compton Theatre Organ in their lounge bar? The answer is, probably only one, the **Plough** at Great Munden.

The **Plough's** Compton Organ was brought to Great Munden from the Gaumont Theatre, Finchley, by the pub's former owner, the late Mr. Gerald Carrington. Mr. Carrington extended the lounge bar to accommodate it, and rechristened the room "The Compton Lounge".

The Compton Organ is truly an impressive sight - and sound - and present owners Margaret and Tony Merridale are working hard to encourage enthusiasts to hear and play it. Regular guest organists give recitals of all types of music (see "What's On" column), and a Lea Valley Cinema Organ Society has been founded at the pub, with regular meetings. Membership is £8 per year (£12 for families, £5 for under-17s) and the Society especially encourages young organists to play the Compton.

The **Plough** is a welcoming pub, serving a good selection of Rayments, Greene King and Marstons real ales. If you have occasionally heard small modern Japanese organs being played in pubs, forget them; the **Plough's** Compton Theatre Organ is a totally different experience. And if you don't happen to like organ playing, well, there's a bright public bar with plenty of pub games.

PL

Inevitable

It had to happen somewhere, and it has happened in the north-west. **Warrington Brewers Burtonwood** have produced a bottled **Big Brother** extra strong ale, with an original gravity of 1084. You can buy it in **Burtonwood** pubs (your nearest is in **Staffordshire**), or a two-bottle pack is obtainable by mail order for an incredible £3-65. Not even **George Orwell** could have foretold such a price.

Cheers, Chiltern!

Thanks to Chiltern Radio for picking up and featuring our September "Save Our Pubs" story. Chiltern's Sheila Mallett tells us that she is always interested in beer and pub news, so why not call her on Dunstable 666884 if you have an item of interest (after you have informed the Newsletter, of course).

PLANNING NEWS

Once the **Oliver, Watford's Berni Inn** is now the subject of a planning application for change of use to a building society office. Yet another lost town centre pub? And in **Potters Bar**, proposals are afoot to replace the **Lion** with a block of offices. Out in the country, **Greene King** propose to extend the Good Beer Guide-listed **Woodman** at **Chapmore End**, and to knock the two small bars into one.

Readers are reminded of their right to make comments on these and any other planning applications, which should be made by letter to the planning department of their local council, where the submitted plans may also be inspected.

Newsletter pubs in Mid-Chilterns area

The Hertfordshire Newsletter can be found in the following pubs in the Mid-Chilterns branch area: **Aldbury: Valiant Trooper**; **Boxmoor: London Vintners off-licence**; **Briden's Camp: Crown & Sceptre**; **Chipperfield: Royal Oak, Two Brewers**; **Flaunden: Green Dragon**; **Frithsden: Alford Arms**; **Hemel Hempstead: Marchmont Arms, Old Bell**; **Little Gaddesden: Bridgewater Arms**; **Long Marston: Queens Head**; **Sarratt: Boot, Cock**; **Tring: Old Kings Arms**; **West Hyde: Royal Oak**.

Lucky Thirteen

On Monday 10th September, six members of North Herts branch set out for the **Black Horse**, Ireland, near Shefford, for a games evening against North Beds branch. This was the first fixture since North Herts won the conker championship against South Herts at the **Plough**, Datchworth. The North Herts team of Pete Clarke, Dick Pease, Jane Arnold, Rod Shelton and Mike Gannon soon made their mark by racing to a 3 - 0 lead in the darts section. After further rounds of skittles, crib and dominoes, the final darts game involving all members saw North Herts holding a slender 9 - 8 lead. North Beds led the darts throughout until late in the game, when Rod Shelton stepped onto the ockey and threw a magnificent double thirteen (lucky for some!) to win North Herts the tournament 10 - 8. A thoroughly enjoyable evening was had by all, and the return match is eagerly awaited.

New Brews

Watch out for new beers from **Adnams** and **Sam Smiths**. The **Southwold** brewers have recently introduced a new light bitter, **Adnams LBA, OG 1032**. Meanwhile our friends from **Tadcaster** have come up with **Tadcaster Bitter**, a light coloured 1035 brew, served from wooden casks.

Why I don't like early lunches

For those of us who arrive at the pub around 12 o'clock, an unpleasant surprise is often in store. The beer that we have drunk on many occasions and enjoyed enough to recommend to others has become a warm, uninspiring substance. The problem is that uninformed, inexperienced bar staff have not drawn off the beer left in the pipes overnight. In some pubs with long pipe runs this can be three pints or more, so a false economy on the part of the publican may also be the problem. For those of us who get served this beer the taste will tell, as the ale often looks perfectly clear. So come on publicans - let's get it right.

Steve Bury

Regional Meeting

CAMRA members from **Hertfordshire, Buckinghamshire, Oxfordshire and Berkshire** are having a one-day get-together on **Saturday 17th November** at the **Clayton Arms, Marlow**. All **CAMRA** members are welcome to attend, to discuss matters of campaigning importance, and to consume quantities of **Brakspears'** delicious ales. Starting time is 11am.

'Here for the Beer'

The touring exhibition of Hertfordshire brewing history, featured in the October Newsletter, can be seen at **Watersmeet, Rickmansworth** until 17th November. It then takes a break until after Christmas, re-opening at the **Hitchin Museum** on 29th December for one month.

Winter in Southend

How about taking a trip with your mates to **Southend** this month? If the weather doesn't attract you, perhaps the thought of a beer festival might. **CAMRA's** **Southend Winter Beerex** is being held at the **Esplanade Pub** on the sea front from 14th to 18th November, with lunchtime (except Wednesday) and evening sessions. Admission to card-carrying **CAMRA** members is free.

Christmas Newsletter

Next month's issue of the Hertfordshire Newsletter will, as usual, be a two-month edition covering December and January. Any contributions of a seasonal nature - articles, poems, cartoons etc. - would be warmly welcomed by the editor. See back page for details and copy deadlines. Cheers!

BRANCH OUTING

A Ramble in the Chilterns

Watford & District Branch held their first ramble (as opposed to a pub crawl) on Saturday 4th August. A good starting place in the Chilterns is Lane End, where there is an excellent free car park - a car is essential to get to this area. Seven people turned up for the ramble, 5 members and 2 non-members from Uxbridge who had seen the event advertised in the local press.

Heading south, we passed the church then turned up a track to the **Jolly Blacksmith**, which still has a forge next door. Thence onto a footpath through the wood and finally into the open and across a field of highland cattle - lost already! - down a lane and into the **Prince Albert**, Frieth. The **Prince Albert** sells Brakspears Mild, Bitter and Best Bitter - the mild was excellent. Back out into the sunshine, over the hill to Little Frieth and onto footpaths again. One of these was overgrown with stinging nettles, and our two shorts-clad members had to take care.

A steady drop through yet another beech wood, into the valley and on to Skirmett. The **Old Crown** (Brakspears) has been smartened up since I first visited it and now has a restaurant. The tap room is still basic though, and no-one minds muddy boots. The mild and bitter were reasonable. Then out and along the road to Fingest and the **Chequers**, where Brakspears Mild and Bitter were on offer. The bitter was a trifle cloudy and one pint was definitely the end of the barrel. The barmaid could see nothing wrong with it, but admitted she knew nothing about beer! It was changed, but why should real ale drinkers have to put up with ignorant bar staff? Food is available at the **Chequers**, but is a bit pricey. Opposite the pub is Fingest church with its huge gabled Norman tower - well worth a visit.

We left the **Chequers** in pouring rain and engaged in the long slog uphill through Hanger Wood to Cadmore End. Fortunately the rain soon stopped and apart from being adopted by an over-friendly dog we made the **Ship** at Cadmore End without problems. Excellent Brakspears Bitter and Special are on offer in this friendly pub. Staying in the pub till closing time, the weather meanwhile deteriorated, so the tour organiser decided to curtail the afternoon walk, and we made our way back to Lane End via Cadmore End Common, thence into Lane End from the north. We climbed into the car at about 4pm, just as the heavens opened. We had walked about 8 miles, visited 4 Brakspears pubs and had a very enjoyable day out.

If you are thinking of following in our footsteps, you will need the CAMRA Buckinghamshire Beer Guide and the Chiltern Society's footpath map No 11, which shows all the pubs. This is an excellent area for rambling, and every village has at least one excellent pub.

When is the next ramble? Watch the events page.

John Hurrell

JOIN CAMRA NOW!

Membership form

I/We wish to become a member/members of
the Campaign for Real Ale Limited

I/We agree to abide by the Memorandum and
Articles of Association of the Campaign

I enclose £7 (£10 overseas) for a year's full membership
We enclose £7 for a year's joint full membership

FULL NAME(S)

FULL POSTAL ADDRESS

Date

Cheques should be made payable to Campaign for Real Ale Limited
Send to Membership, CAMRA, 34 Alma Road, St. Albans,
Herts AL1 3BW.



FAMILY PUBS

Room for the Kids

Having recently become parents, my wife and I have found our social outings rather restricted. A good summer alleviated the problem as many pubs nearby have gardens, but now the summer is over the problem recurs: where can we go for a drink with our child in tow? Some clubs provide the answer, but often quality of beer and/or membership restrictions rule them out.

In the Mid-Chilterns branch area there are a number of pubs with facilities for children. The largest, and probably the best, room I have come across is at **Langleys**, on the A41 at Kings Langley. This is a large establishment with separate public bar, large lounge and restaurant, and separate family room in 'Wild West' style. There is also an excellent garden for children if the weather is fine. Youngers IPA and Scotch Bitter are available. Also in Kings Langley, the **Bell** at Primrose Hill has a separate building designated as a childrens/games room. Benskins and Burton ale are on sale here.

The **Garden Gate** at Chorleywood, on the A404 Rickmansworth road, has recently been converted to a bistro-style pub complete with restaurant. Children are welcome in part of the bar adjacent to the restaurant. Benskins and Burton Ale are available in the pub, which is open outside normal licensing hours for food and non-alcoholic drinks.

The **Bridgewater Arms** at Little Gaddesden has one end of its bar area where children are welcome. This well-run free house has its own small brewery, producing Bridgewater Best Bitter, Special and, occasionally, Earls Ale.

The **Queen's Head** at Long Marston, an ABC house serving a good selection of beers including Morrells Light, ABC Bitter, Everard Tiger, Draught Bass and Burton Ale, is an excellent establishment which has a separate childrens room. Just across the border into Bucks, the **Golden Rule** in Dagnall has a small area where children may be taken.

A word of warning - it is always advisable to phone ahead to ensure these facilities are still available. I have found to my cost that what may have once been a childrens room has been turned into a flashy lounge where children are definitely not welcome!

Barry Bonnick

BOOZER'S BOOKSHOP

IF YOU are building up your own beer drinker's library, here are a few volumes you should not be without:

- The Traditional English Pub — A Way of Drinking by Ben Davis. **£12.50.** (An expert's eye view of our famous institution, complete with fine photographs).
- Bricks and Beer, **£2.** (A well-illustrated history of pub architecture produced for a London exhibition).
- A Good Head for Beer by Gareth D. John. **£6.50.** (The latest report on the British brewing industry).
- Time Gentlemen Please! by CAMRA's Pub Preservation Group and SAVE. **£3.50.** (A critical examination of the fate — and future — of many of our finest houses).
- Pub Preservation Booklet. **90p.** (The Pub Preservation Group's guide to the threats facing the British pub).
- Pocket Guide to Beer by Michael Jackson. **£2.95** (The instant handbook for drinkers who wish to learn about beers from around the globe).
- Hops and Hop Picking by Richard Filmer. **£2.65** (All you ever wanted to know about the history of beer's bitter ingredient).
- Capital Ale by Roger Protz. **£1.75** (A book describing 200 of London's best pubs).
- Brewing and Breweries by Maurice Lovett. **£1.10** (An easy-on-the-eye journey round Britain's brewing heritage).
- Cidermaking by Michael B. Quinion. **£1.10** (A guide to the traditional delights of scrumpy).
- The Traditional Cider Directory by David Kitton. **£3.15.** (An invaluable new guide to scrumpy, the pubs which sell it and the people who produce it).

All prices include postage and packaging, and are available from CAMRA, 34 Alma Road, St. Albans, Herts AL1 3BW. Make your cheques payable to CAMRA Ltd.

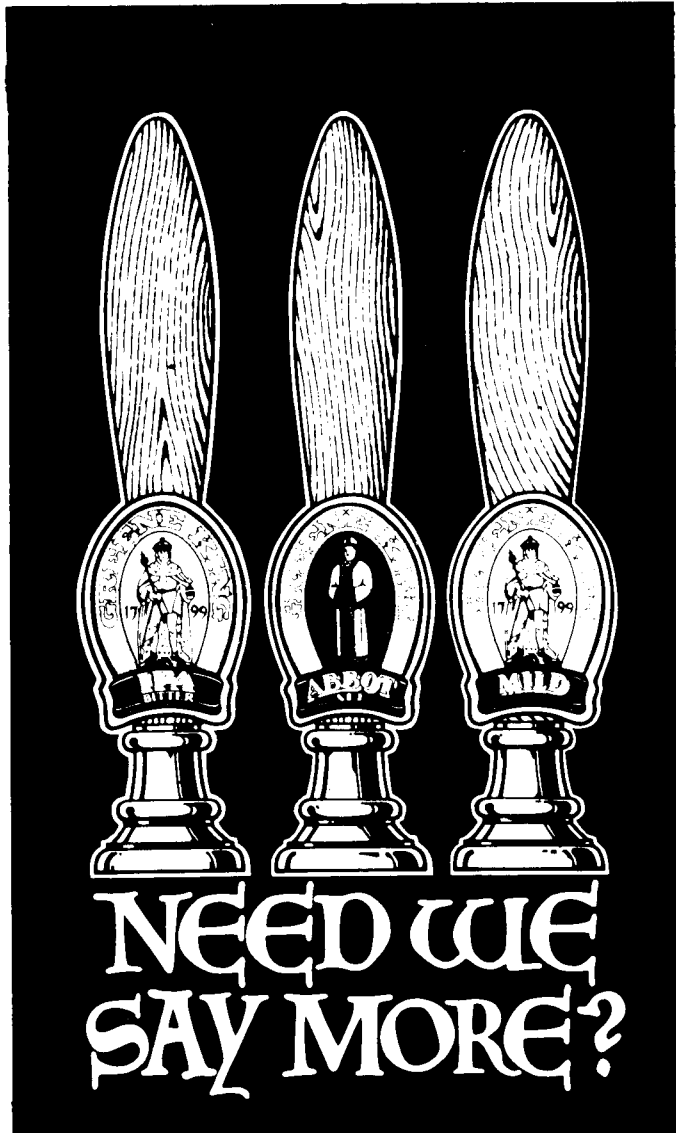
PUB OF THE MONTH

Rose & Crown, Hitchin

November's Pub of the Month for North Herts branch features a Hitchin town pub for the first time. Dick and Jill Pylle have been running the **Rose & Crown** for 11 years, and real ale made a welcome return in 1982. The **Rose & Crown** is known to have existed since 1652, but moved to its present location in the market square in 1720. The Old Hitchin brewers W & S Lucas Ltd served the **Rose & Crown** until their demise, and had a brewery on the corner of Sun Street. At one time there were seven public houses in the Market Square, but only the **Rose & Crown** has survived. Come along to the Pub of the Month social on Wednesday 28th December, and find out why.

Peter Clarke

The Pub of the Month award is made each month by CAMRA'S Hertfordshire North branch, and is limited to pubs in the North Herts branch area.



FIVE YEARS AGO

November 1979's Newsletter quoted a Charles Wells spokesman as saying that Wells' Fargo strong bitter was "going very well", but shortly afterwards the beer was withdrawn. Fargo is one of the very few real ales to be introduced and then withdrawn locally in the past few years; most have been very successful, such as Suffolk brewers Tolly Cobbold's Original, which made its first appearance in the county 5 years ago. Meanwhile local CAMRA members still had cause for complaint..... at Greene King, for announcing the closure of the much-loved Chequers at Wood End, and at a local free house, selling Adnams Bitter at an extortionate 48p per pint!

WHAT'S ON AT YOUR PUB

- 1 Nov **St Albans:** Rose and Crown. 8.30pm. Traditional music session.
- 2 Nov **Great Munden:** Plough. John Chapman at the Compton Organ.
Stanstead Abbots: Crown. 8pm. Hoddesdon Folk Club. Guests: Strawhead.
- 3 Nov **Great Munden:** Plough. Harry Jackson at the Compton Organ.
- 4 Nov **Great Munden:** Plough. David Hamilton at the Compton Organ.
- 6 Nov **Tewin:** Rose and Crown. 9pm. Traditional music session.
- 7 Nov **Puckeridge:** Buffalo's Head. Folksinging evening musicians and singers welcome.
- 8 Nov **St Albans:** Rose and Crown. 8.30pm. Traditional music session.
- 9 Nov **Great Munden:** Plough. John Abson at the Compton Organ.
Stanstead Abbots: Crown. 8pm. Hoddesdon Folk Club. Guests: Tundra.
- 10 Nov **Great Munden:** Plough. Mike Newbold at the Compton Organ.
- 11 Nov **Great Munden. Plough.** David Shepherd at the Compton Organ.
St Albans: Beehive. Watson Sunday Music Club - live acoustic music.
St Albans: Garibaldi. Lunchtime traditional music session.
- 13 Nov **Hertford:** Dimsdale Arms. 7.30pm. British Beermat Collectors Society meeting.
- 14 Nov **Great Munden:** Plough. Lea Valley Cinema Organ Society meeting.
- 15 Nov **St Albans:** Rose and Crown. 8.30pm. Traditional music session.
- 16 Nov **Stanstead Abbots:** Crown. 8pm. Hoddesdon Folk Club. Guest: Bob Walser.
- 17 Nov **Great Munden:** Plough. George Blackmore at the Compton Organ.
- 18 Nov **Great Munden:** Plough. Doug Levey at the Compton Organ.
- 22 Nov **St Albans:** Rose and Crown. 8.30pm. Traditional music session.
- 23 Nov **Great Munden:** Plough. John Chapman at the Compton Organ.
Stanstead Abbots: Crown. 8pm. Hoddesdon Folk Club. Singaround.
- 24 Nov **Great Munden:** Plough. Harry Jackson at the Compton Organ.
- 25 Nov **Great Munden:** Plough. Mike Newbold at the Compton Organ.
St Albans: Beehive. Watson Sunday Music Club - live acoustic music.
St Albans: Garibaldi. Lunchtime traditional music session.
- 29 Nov **St Albans:** Rose and Crown. 8.30pm. Traditional music session.
- 30 Nov **Stanstead Abbots:** Crown. 8pm. Hoddesdon Folk Club. Guest: Roy Harris.

Please send details of events, in not more than 15 words, by the 10th of the previous month to Peter Lerner, 14 Hazeldell, Watton-at-Stone, Herts.

FLINTS WINE BAR

Market Hill, Royston

☎47512

MARSTON PEDIGREE & OWD RODGER
on handpump

Home-cooked food available all day
Monday to Saturday

Closed Sunday

PUB NEWS

Websters Yorkshire Bitter has replaced Trumans Bitter at the **Feathers**, Wadesmill. Rumours are circulating concerning two McMullens pubs - the **Nags Head** at Wellpond Green is reported to be serving AK by top pressure, while the **Duck** at Burnham Green is rumoured to have installed a handpump. Watch this space for confirmation.

Benskins Bitter is now on sale again at the **White Horse**, Shenley, following a bitter dispute between the pub owners and CAMRA over the sale of John Bull keg bitter via handpump. Benskins and Burton Ale are now available and in excellent condition, but at 86p per pint for Benskins the pub is only for the affluent. Burton Ale is now also available, to the same affluent minority, at the **Swan**, Bushey - at 92p per pint.

Real ale has been discontinued at the **Batchworth Hall**, St Albans, a Watneys pub. **Foxy's Wine Bar** in Watling Street, Radlett is now serving Marston Pedigree.

The **Three Tuns** at Ashwell has added Greene King KK mild to its range, and is reported to be doing a roaring trade as a result. Whoever said mild didn't sell? Greene King Abbot has been discontinued at the **Rose and Crown**, Baldock, leaving IPA as the only real ale available.

In Hitchin, the **Sailor Boy** has discontinued Banks & Taylors Shefford Bitter as a regular beer, although it can occasionally be found as a guest beer. Wethereds Bitter is normally available, and often Flowers Original as well. At the **Sun Hotel** in Hitchin, Springfield Bitter is now on sale alongside Charringtons IPA. The latter is also available at the **Edward the Confessor** in Stevenage. The new saloon bar is now open, smart dress only. Also in Stevenage, the **Twin Foxes** has been converted to a one-bar pub, with two pool tables and a dartboard. Opening hours are displayed outside the pub - an excellent feature. Wethereds Bitter and Flowers Original are available at 74p and 80p respectively - but are sold under their 'house' names of - wait for it - Albert Ebenezer Fox's and Ebenezer Albert Fox's! The **Mallard** in Stevenage now also has Flowers Original alongside Wethereds.

News from Hoddesdon: Macs AK is available alongside Country Bitter at the **Sun**, and Ind Coope Bitter has been added to Benskins and Burton Ale at the **George**. The Burton Ale has been discontinued, though, at the **Golden Lion**, which now has Ind Coope Bitter only.

PUB PROFILE

A visit to Sebastians

When the **Red Lion** in Watling Street, Radlett became a Beefeater Steak House, following the sale of Henekey Inns to Whitbread, many changes were rumoured. With certain apprehensions I entered the hotel, resplendant in its new maroon and gold colours, but once inside I found the bar had been tastefully redecorated. The more I saw the more pleased I was, as the improvements could not offend any of the old regulars and will no doubt attract new custom. The Greene King IPA has gone, but you can still get Abbot Ale and Draught Bass. In the downstairs Lion Bar, Flowers is available, thus keeping the range to three real ales.

Over the street door to the lounge bar is a new sign - **Sebastians**. On enquiring whether this was a tribute to our Olympic gold medallist Mr Coe, I was informed, much to the amusement of some customers, that it was the name of the manager's dog. A food counter has been added here, supplying hot meals seven days a week, lunchtime and evenings. Quality and variety is being offered to those wanting something different to the Steak House Restaurant downstairs.

Steve Bury

BEER BARREL - OFF LICENCE

Under new management - formerly the 'Jug & Firkin'
67 Albert Street, Stevenage Old Town ☎ 726093

REAL ALES TO TAKE AWAY

ADNAMS · EVERARD · MARSTON · BANKS & TAYLOR

BRANCH DIARY

HERTFORDSHIRE NORTH BRANCH

Monday 5th November

Social with Stansted Young Farmers at the Chequers, Wareside, 8pm.

Wednesday 7th November

Social at the Goldcrest, Baldock, 8pm.

Wednesday 14th November

Social at the Bell, Therfield, 8pm.

Wednesday 21st November

Branch AGM at the Red Lion, Stevenage, 8pm. All members please try to attend.

Wednesday 28th November

Pub of the Month Social at the Rose & Crown, Hitchin, 8pm.

Wednesday 5th December

Social at the Rising Sun, Halls Green, 8pm.

Wednesday 12th December

Branch Meeting at the Bull, Watton-at-Stone, 8pm.

Contact Peter Clarke ☎ Stevenage 65957

HERTFORDSHIRE SOUTH BRANCH

Monday 19th November

McMullen brewery visit, 10am.

Contact Eric Sim ☎ Hatfield 60647

WATFORD & DISTRICT BRANCH

Wednesday 14th November

Social at the Swan, Park Road, Bushey, 8pm. All welcome, come with a friend.

Wednesday 21st November

Branch Meeting at the Wheatsheaf, Lower Watford High Street, 8pm. All welcome - free pint for all newcomers.

Contact Tony King ☎ Garston 672587

MID-CHILTERNERS BRANCH

Thursday 8th November

Social at the Crown & Sceptre, Bridens Camp, 8.30pm.

Friday 16th November

Social at the Rising Sun, Berkhamstead, 8.30pm.

Wednesday 28th November

Pub crawl of Old Hemel. Start at the Marchmont Arms, 8.30pm.

Contact Pete Freeman ☎ Hemel Hempstead 69773

THE ROYAL OAK, BUSHEY

Free House

★ 6 Real Ales □ Food ★
★ Guest Beers ★

Restaurant and carvery now open

Reservations preferable ☎ 01-950 2865

SPARROWS HERNE ★ ON THE A411

The Hertfordshire Newsletter is produced by the Hertfordshire North, Hertfordshire South, Watford & District and Mid-Chilterns branches of the Campaign for Real Ale Ltd. The views expressed are not necessarily those of the Editor, CAMRA Ltd or its branches. The Editor gratefully receives articles or letters for publication. Send to **Cathy Totman, Flat 1, The Old Stables, Woodside, Hatfield, Hertfordshire.**

Subscriptions: £2.25 for 12 issues. Send to address above. Cheques/POs payable to CAMRA Herts Campaigning Fund.

Advertising: £7 per 2.5cm column. Artwork can be made up at extra cost. Contact **Eric Sim ☎ Hatfield 60647** for details.

COPY DATE FOR DEC/JAN EDITION NOVEMBER 9th. FOR FEBRUARY EDITION JANUARY 11th.

Printed and filmset by D & S Graphics, 61/63 High Street, Ware, Hertfordshire.