

**FREE**



HERTFORDSHIRE'S  
**Pints of View**

The bi-monthly publication for the discerning real ale drinker  
Feb/March 2003      Circulation 5000      No. 197

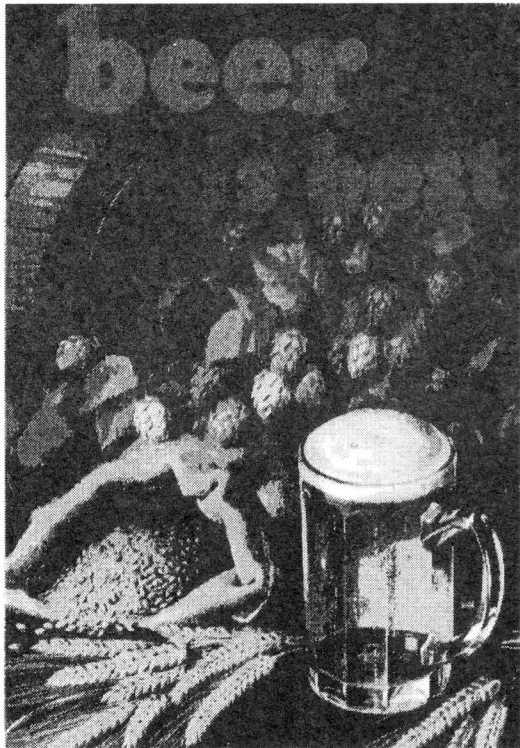


**In this packed issue:**  
**CAMRA South Herts celebrate their 30th birthday**  
**CAMRA's first National Pubs Week**  
**Real Ale - It's no mystery**  
**Ware - a few of the pubs you should visit**  
**Watford Beer Festival breaks all records**

## THE BITTER END

### Real ale - it's magic, but it's no mystery

There are some 2000 real ales brewed in the UK by over 400 independent brewers. Nowhere in the world is there



"Beer is Best". An advertisement from 1933 emphasizes beer's nourishing qualities.

such variety or a greater choice of tasty draught beers. Our choice and enjoyment are under threat.

Four companies now control over 80% of beer sales in Britain and this looks set to become more concentrated. These companies concentrate on marketing a small number of lager brands and "smooth flow" nitro-keg beers. The few real ales they do produce are not promoted and are often brewed centrally after the local breweries that originally produced them have been closed. It is not surprising that their sales are declining as a result.

CAMRA is working to promote real ales from Britain's family and regional brewers, the biggest producers of real ale, as well as those from the hundreds of small and micro breweries.

#### So why should you drink real ale?

It's a full-flavoured refreshing alternative to the usual national beers. It should not be warm or cloudy (no matter what some bar staff may tell you) and it is also a myth that it is more fattening than other beers. It should not be "flat", but should be pleasantly conditioned, rather than fizzy. Most real ales are brewed to meet local tastes and often use local ingredients, so there is a huge variety to choose from:

Hertfordshire's Pints Of View is produced by the Hertfordshire South, Watford & District and Herts-Essex Borders Branches of the Campaign For Real Ale. The views expressed are not necessarily those of the editor, CAMRA Ltd or its branches. Any articles or letters for publication should be sent to Steve Bury, 14 New Road, Shenley, Herts WD7 9EA.

Subscriptions: £4 for 12 issues. Send to John Lightfoot, 66 Dryfield Road, Edgware, Middx, HA8 9JT. Cheques made payable to CAMRA South Herts Branch.

Editorial: Steve Bury, 14 New Road, Shenley, Herts WD7 9EA. 01727 852258. Advertising: Jim Newman on 01727 835674.

Typesetting by Roger Filler, South Herts Branch, via Quark Express. Printed by Cavalry Creative Services. Ring Charlie on 01707 274584.

## THE BITTER END

dark, light, varying strengths, mild, bitter, stout and porter. Unlike the mass produced lagers and nitro-kegs, two rarely taste the same and most people having tried a few gems soon become hooked.

#### How do you recognise real ale?

The easiest way which is 99% reliable is if it served through a full-sized handpump. There are exceptions where the beer comes straight from the cask and electric pumps in the North and Scotland. Real ale is not pasteurised or pumped full of carbon dioxide (a brewery waste product) or nitrogen. Some pubs now also use sophisticated purified compressed air systems which make the beer equally gassy. It is fashionable for brewers to cash in on the image of real ale by presenting other beers in a similar way. You may find beer served via a large font with a small handpump style switch on top. It's not real ale! Some

unscrupulous pubs use fake handpumps, often to dispense cider.

#### I like "smoothflow" beers and lager - why shouldn't I drink them?

CAMRA is about choice and we are not trying to dictate what you should drink. What we are trying to do is make people aware of what good real ale is, where to get it and make it a readily available alternative for all drinkers. The most important thing is that we protect real ale and the breweries and brewers who produce it as much of our heritage has been lost already and more is under threat.

Look around a little more, real ale is out there in the pubs waiting for you to find it.

Mike Benner

*A fine beer may be judged with only one sip, but it is better to be thoroughly sure.*

CZECH PROVERB



Lin & Dick  
welcome you to

The  
Mermaid

98 Hatfield Road  
St Albans

01727 837758

Homemade food a Speciality  
(Lunchtimes only)

*Always three regular real ales  
and two guests*

### Old Cross Tavern



**Real Ale Free House**

*"The way pubs used to be"*

8 St Andrew Street, Hertford

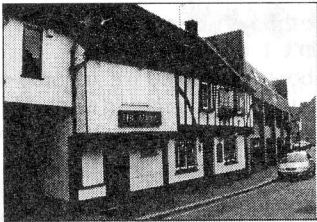
Tel: 01992 583133

*Food available lunchtimes  
Monday-Saturday*

SOUTH HERTS PUB OF THE YEAR  
1999 & 2000

## WARE IT'S BEEN FOR 2002

Local CAMRA member Jan Orden looks at some of Ware's better pubs serving quality real ale.



### The Albion, Crib Street

A lovely, small, locals' local, especially in the winter with the two real fires burning away. As well as Adnams Bitter and Flowers IPA, which are regulars, the third handpump has recently been serving Jennings Bitter and very nice it is too.

### Crooked Billet, Musly Hill

As usual in the winter months Stuart and Sue have been serving Greene King XX Mild in tip-top condition. IPA and either Abbot or Speckled Hen are also available. Sky Sports and real fires also attract people "up the hill".



### Worpell, Watton Road

As locals know this is still as good a place as anywhere to drink Greene King beers. Why can't other pubs sell Abbot as good as George's? IPA is also a regular with occasional guests from the Greene King stable from time to time.

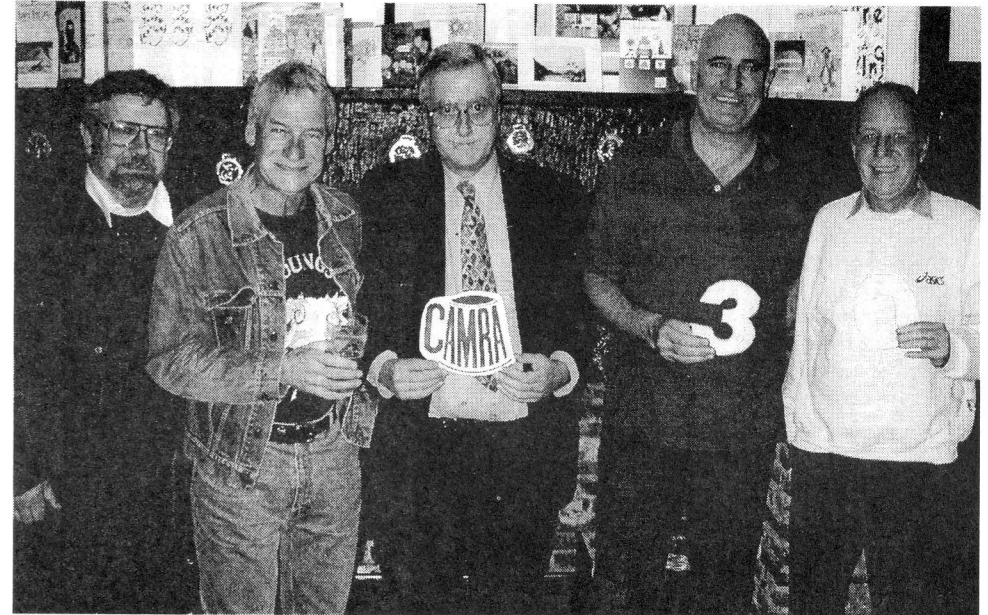
### Rose and Crown, Watton Road

One of the finest pints of Mac's AK in the area is to be found here where Richard the landlord is McMullen's current Master Cellarman. Recently Wadworths 6X and St Austell Tribute were on and very drinkable. Large, safe garden when the sun shines.



### Old Bulls Head, Baldock Street

Since John took over, the range of beers has improved with 4-8 beers always available. Prices for guest ales have also gone down by 15p. Tetley is supplemented by the Adnams range and Sheps Spitfire. Recent guests include Orkney, Moorhouse and Otter.



## CAMRA South Herts - Thirty, not out

The first active CAMRA branch to celebrate its 30<sup>th</sup> birthday did so in November when the South Hertfordshire branch held three celebratory evenings in various pubs in Hertfordshire to commemorate the event.

The branch was founded in November 1972 and at the final evening held in The Lower, Red Lion, St Albans, the first pub to convert to real ale in the city after pressure from the then fledgling organisation, nearly 100 members, past and present, met to discuss the past, exchange memorabilia and photographs and renew old acquaintances. Five of the original members that founded the branch were also present (see photo). Branch Chairman Phil Defriez, said "As the oldest surviving branch we do feel a little special. We actively campaign, hold a very successful beer festival and have a healthy membership. Long may it continue".

Five of the founder member of CAMRA South Herts. From left: Fran Nowak, John Hanscomb, John Green, Steve Bury & Richard Palmer

## THE WHITE HORSE

Castle Street, Hertford

A Fuller's  
"Freestyle" House

A minimum of seven cask  
ales always available  
including  
at least four guest beers

Tel: 01992 501950

# Watford festival breaks all records

The 8th Watford Beer Festival was the most successful yet. The two-day festival, held on 1st and 2nd November, which opened on Friday lunchtime for the first time, attracted hundreds of thirsty real ale fans to the West Herts Sports & Social Club, Watford & District CAMRA's spiritual home. Over forty different beers and ciders were on offer and eleven new members joined the Campaign during the course of the festival. CAMRA Watford Chairman, Martin Few, was enthusiastic about this year's event. "Once again we were well supported by beer drinkers from Hertfordshire and beyond. We sold more beer this year and had more visitors. Luckily we managed to drink it all before closing time on Saturday.



I'd like to thank all our members and friends for their support and we hope to see you all next year."

## Top Three Beers of the Festival as voted by customers

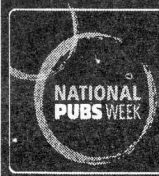
1. **Red Smiddy**, Kelburn Brewery, Glasgow
2. **Silver King**, Ossett Brewery, W. Yorks
3. **Turnpike**, Harviestoun Brewery, Clackmannanshire



## CAMRA launch first National Pubs Week

Did you know that an astonishing 20 pubs close every month and over a quarter of adults (27%) NEVER visit a pub? If this trend continues then Britain's unique heritage will disappear very quickly. That is why CAMRA is launching its first ever National Pubs Week on Saturday 22 February: its aim is to encourage more people to visit pubs more often. Mike Benner, CAMRA's Head of Campaigns says: "The slogan is "there is a pub for everyone" and we seek to highlight the enormous variety of pubs in the UK. We are not only supporting the quaint country pubs but also community and town centre pubs as we want all of the pub industry to benefit from this initiative". CAMRA, and a number of industry partners, are encouraging as many pubs throughout Britain to take part in a variety of events throughout the week to encourage more people to attend pubs more regularly.






**There's a pub for everyone**

22nd February - 1st March 2003

[www.camra.org.uk/pubswweek](http://www.camra.org.uk/pubswweek)



## THE WOODMAN CHAPMORE END



Real ale direct from the cask  
Regular guest ales  
Large garden/childrens play area  
Bar snacks every lunchtime  
Now open all day every  
Saturday and Sunday  
Tel: 01920 463143  
[www.woodmanpub.com](http://www.woodmanpub.com)

## GOOD BEER GUIDE ENTRY 2003



## The ELEPHANT & CASTLE

AMWELL LANE, AMWELL,  
WHEATHAMPSTEAD, HERTS.  
Tel: 01582 832175

### QUALITY FOOD

Greene King IPA, Abbot Ale  
& two rotating Guest Beers

# DOWN YOUR WAY

Our information comes from a wide variety of sources and it is inevitable that some errors will occur. Please inform us of any mistakes and the appropriate correction, apology or retraction will be published. Ed.

❏ **BRAMFIELD:** Apologies for the late publication of this item which should have been in the Dec/Jan edition. The **Grandison Arms** remains closed though the owner has had an unexpected bonus from the BBC in November, who were looking for a disused pub as a film set and paid him to use the **Grandison** for a week. The villagers also gained £250 for the use of the car park at the Village Hall opposite so you can speculate what was paid for the pub. Out of frustration at the loss of their local the villagers have started up the **Bramfield Social Club** in the Village Hall supported by Greene King. It will open on Wednesdays, Fridays and Sundays. South Herts CAMRA and the local residents will still oppose any application for change of use for the pub which could still be a viable business with the right people running it.

❏ **HERTFORD:** **Thirsty Brandon's** has applied for planning permission to turn the first floor into a Thai restaurant. The pub can also expect the results of government's planning inspectorate ruling on the yellow and red exterior paint job. The **White Horse** has won a £1000 grant from East Herts Council to help preserve its historic character.

❏ **HIGH CROSS:** The **White Horse** has applied for planning permission to construct B&B hotel facilities.

❏ **SANDRIDGE.** The **Rose & Crown** is on the market for £85,000 leasehold.

**ST ALBANS:** The new licensees of the **Lower Red Lion**, Fishpool Street, have wasted no time in satisfying the local population with the very best from microbrewers round the country. They have already hosted one beer festival and Mary, Alan and Chris are now hosting the East Anglian SIBA Beer Festival where they will be exhibiting over 60 beers

## WANT TO COMPLAIN?

Local Trading Standards exist to protect the interests of consumers.

If you are experiencing short measure after politely asking for a top up, if you find pubs do not show an accurate price list or if you feel a pub is deliberately ripping you off Trading Standards will investigate.

Trading Standards Department  
45 Grosvenor Road  
St Albans, Herts. or Tel: 01992 556799

from micros across the East Anglian region. Champion beers will be chosen in different categories. The festival will run from 5.30pm on Wednesday 19 March to Sunday 23 March. Watch out for more festivals later this year.

❏ **WARE:** The Bell has recently closed for refurbishment. The **High Oak** has new landlords and local reports suggest the beer quality has improved.

❏ **WELL END:** The public bar of the **Mops & Brooms**, has been redecorated by McMullen's. It was last refurbished in October 1997.



Find out what is happening in the world of real ale in your area by logging on to:

South Herts: [www.hertsale.org.uk](http://www.hertsale.org.uk)  
North Herts: [www.nherts-camra.org.uk](http://www.nherts-camra.org.uk)  
Mid-Chilterns: [mysite.freemove.com/midchilternscamra](http://mysite.freemove.com/midchilternscamra)  
Herts/Essex Borders: [www.heb-camra.org.uk](http://www.heb-camra.org.uk)  
Watford & District: [www.watfordcamra.org.uk](http://www.watfordcamra.org.uk)

# Brewery names Wordsearch

|   |   |   |   |   |   |   |   |   |   |   |   |   |   |   |
|---|---|---|---|---|---|---|---|---|---|---|---|---|---|---|
| W | H | E | S | L | A | P | A | C | K | H | O | R | S | E |
| P | O | A | N | Y | T | B | E | O | W | U | L | F | I | B |
| S | M | C | M | U | L | L | E | N | T | B | F | A | R | T |
| T | K | O | S | V | R | E | W | N | P | O | D | E | I | L |
| B | C | L | D | U | A | N | E | L | G | O | O | D | S | U |
| S | H | A | R | P | S | W | F | I | O | H | A | T | R | C |
| N | A | E | A | B | R | A | I | N | S | A | R | N | O | K |
| O | N | L | D | E | L | W | D | F | B | T | K | I | S | L |
| R | B | A | D | G | E | R | D | I | M | U | A | H | E | L |
| E | Y | V | O | E | A | C | L | T | B | D | U | R | A | I |
| M | T | I | G | Z | E | V | E | S | H | A | M | S | U | M |
| A | R | R | A | N | V | E | R | U | L | A | M | T | K | D |
| C | O | C | L | A | R | K | S | D | R | A | W | U | J | A |
| F | L | M | J | T | O | V | K | E | L | T | E | K | S | E |
| A | T | R | A | H | B | U | F | F | Y | S | U | D | B | L |

Brewery Names: ALCAZAR, ARRAN, BADGER, BEOWULF, BORVE, BRAINS, BUFFY'S, CAMERONS, CLARK'S, DERWENT, ELGOODS, EVESHAM, FIDDLERS, FORGE, GODDARDS, GOFFS, HANBY, HART, IRIS ROSE, JUWARDS, KELTEK, LEADMILL, LINFIT, MCMULLEN, OAKHAM, PACKHORSE, SHARPS, VALE, VERULAM, WAWNE

Completed entries should be sent to Steve Bury, 14 New Road, Shenley, Herts, WD7 9EA.

The first correct entry opened on the 1st April 2003 will receive a copy of the latest "Hertfordshire Guide To Real Ale".

We thank readers for the large number of entries for the Wordsearch 196. The winner was Ian Blaymires, Well End, Borehamwood.

# BRANCH DIARY

## SOUTH HERTS

- Tues 4 February. GBG survey, Wheathampstead/Harpender/Redbourn.
  - Tues 11 February. GBG survey pub crawl, St Albans. Starting 7pm at **The Mermaid**.
  - Tues 18 February. **GBG Survey**. Colney Heath/Radlett.
  - Tues 25 February. **GBG Survey**. Potters Bar/Northaw.
  - Tues 4 March. **GBG and Pub Of The Year** selection meeting.
- NB: There is no Branch Meeting in Feb.  
Branch Contact: John Bishop  
(H) 01582 768478

## MID CHILTERNES

- Sat 8 February. Branch Social. **CapArtAle**. (Cultural Crawl around Central London)
- Wed 19 February. Branch Social. **Crown & Sceptre**, Bridens Camp. 8pm.
- Wed 5 March. Branch Social, Chenies. **Bedford Arms**, 8pm: **Red Lion**, 9pm.
- Mon 17 March. Branch Meeting and GBG

Selection. Marsworth, Bucks. **Angler's Retreat**, 8pm: **Red Lion**, 9pm.

■ Sat 22 March. Branch Trip to Brighton.  
Branch Contact: (H) 01494 783198

## HERTS/ESSEX BORDERS

- Mon 10 February. Branch AGM. **Rising Sun**, High Wych. 8.30pm.
  - Mon 10 March. Branch Meeting. **The Cock**, Ongar.
- Branch Contact: Graham Darby  
(H) 01279 415895

## NORTH HERTS

- Wed 5 February. Branch Meeting and GBG Selection. **Highlander**, Hitchin. 8pm.
  - Sat 8 February. Saturday ramble (need to book places)
  - Sat 15 February. London Eye/lots of beer.
  - Wed 19 February. Curry Night. Lordship Arms, Benington.
- Branch Contact: Martin Ford  
01438 210137 (eves only)

# BRANCH DIARY

## ENFIELD & BARNET

■ Sat 1 February. Visit to **Mauldon's Brewery**, Sudbury, Suffolk.

Ring Tony Roberts 020 8482 9673.

■ 4 February. Branch Social, **Monken Holte**, High Street, Barnet. 9pm.

■ Thurs 13 February. Branch Social. **Lamb**, Church Street, Lower Edmonton. 9pm.

■ Sat 15 February. **Pub Crawl round Greenwich**. Meet Greenwich Station, from mid-day. First pub **Ashburnham Arms**, Ashburnham Grove.

■ Wed 19 February. Branch Social, **Elephant Inn**, Ballards Lane, North Finchley. 9pm.

■ Wed 26 February. Branch Social, **Dog & Duck**, Hoppers Road, Winchmore Hill. 9pm.

■ Sat 22 February. Pubs Week Promotion in Enfield. Meet **George**, Enfield Town.

■ Wed 5 March. Branch Social.

**Lord Kitchener**, East Barnet Road, New Barnet. 9pm.

■ Tues 11 March. Branch Social. **White Hart**, Chase Road, Southgate. 9pm.

■ Mon 17-Sat 22. Working Social at **London Drinker Beer Festival**, Camden Centre. Tube/BR Kings Cross.

**Branch Contact: Brian Willis**  
(H) 020 8441 1892

## WATFORD & DISTRICT

**Branch Contact:**  
**Martin Few 01923 252412**

The East Anglia branch of **SIBA**  
(**Society of Independent Breweries**  
**Association**)  
will be holding their annual beer festival at

### **The Lower Red Lion,**

Fishpool Street, St Albans,  
between 19-23 March (from 5.30pm.)

Sixty beers from microbreweries in Beds, Herts,  
Cams, Norfolk, Suffolk and Essex

Enjoy a pint at St Albans' oldest Freehouse



## **Lower Red Lion**

**34-36 Fishpool Street, St Albans**

**Tel: 01727 855669**

Nine real ales and draught Czech and Belgian beers  
Selection of Belgian bottled beers and malt whiskies

Host of this year's S.I.B.A East Anglia Beer Festival  
from 19-23 March

Comfortable B & B accommodation